

Billboard Pro Series

Front Service

Billboard Pro Series provide crystal clear image for the ultimate visual experience through color matched LEDs.

High contrast display in Billboard Pro Series enhance the viewing quality regardless of viewing distance option from 4mm to 16 mm; plus, the easy access via rear cabinet doors, allows quick maintenance when needed.

Designed with IP65 standard protection, protect the screen for long lasting quality in harsh conditions

Billboard Pro Series is ideal solution for full outdoor, building top, highway, stadium, stand alone billboard for professional used.

Professional Grade Specifications



Gold Wire



Extra High Refresh Rate
3840 Hz



Long Lasting
Power Supply
with ISO Standard



Aluminum Cabinet



Redundant Signal

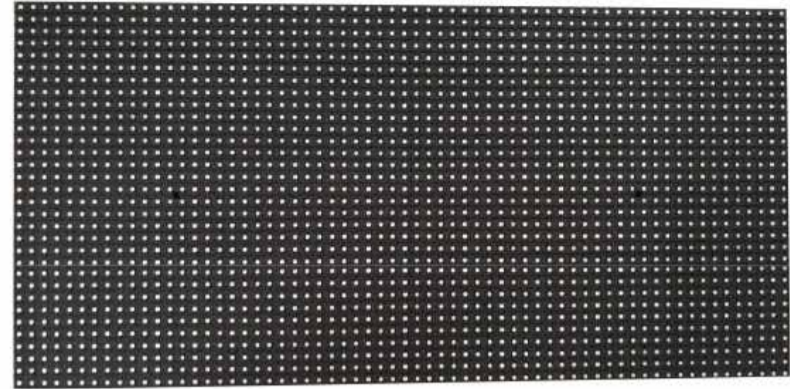


Redundant
Power Supply



Fast
Replacement





320x160 mm Model

**P5 Front Service LED Display,
200% reliability assured by power & data redundancy.**

Internal Wiring



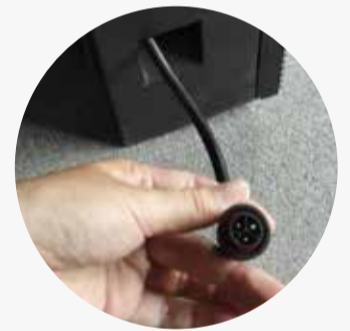
Data cable and power cable goes inside the cabinet via the cabinet side hole

Secured Design



Data cable and power cable goes inside the cabinet via cabinet up and down holes

Full Weather Proof Connection

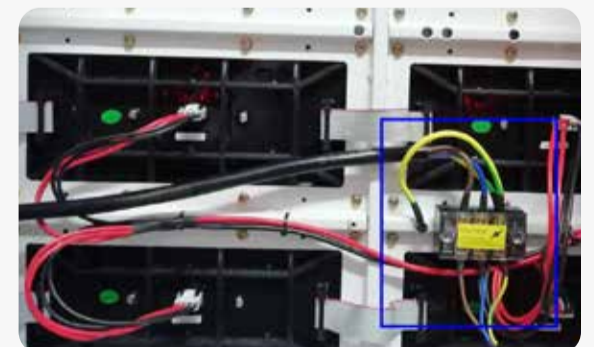


Female and Male fast connectors for the power cable

**Flexible cabinet size,
All screen size fits**



Power Connector Type
Directly plug in, easy install.



Power Terminal Block Type
You have to connect the power cable with power terminal block one by one.

Billboard Pro Series

P5 Outdoor

Front Service

- Easy access
- Fast Replacement

Module Specifications

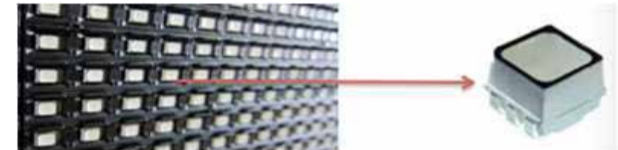
Pixel Pitch (mm)	5
Pixel Configuration	Nationstar SMDZ1921 (R/G/B)
Module Resolution (W*H dots)	64*32
Module Pixels (dots)	2048
Module Size (W*H mm)	320*160

Cabinet Parameters

Cabinet Configuration (Module quantity W*H)	① 6*3 pcs; ② 6*2 pcs; ③ 2*6 pcs; ④ 4*2 pcs
Cabinet Size (W*H mm)	① 960*960 mm; ② 960*640 mm ③ 640*960 mm; ④ 640*640 mm
Module Qty (pcs)	① 18 pcs; ② 12 pcs; ③ 12 pcs; ④ 8 pcs
Cabinet Pixels (dots)	① 36,864 dots; ② 24,576 dots; ③ 24,576 dots; ④ 16,384 dots
Pixel Density	40,000 dots/m ²
Material	Aluminum
Cabinet Weight	32.8 kg/sqm

One Screen Parameters

Brightness	6,000 nits
Brightness Contrast Ratio (Max./Min.)	5,000 : 1
Driving Method	1/8 Scanning
View Angle	Horizontal 160° / Vertical 120°
Min Viewing Distance	5 m
Grayscale Intensity	16 bit
Color Depth	16 bit
Refresh Rate	3,840 Hz
Screen Wiring	Gold Wiring
Frame Frequency	50 -- 60 Hz
Input Voltage	AC220V/50Hz
Defects Rate	<= 0.00001
Power Consumption	Max: 780/m ³ Average:280W/m ³
Cabinet Weight	32.8 kg/sqm
MTBF	>10,000 hours
Life Span	>= 100,000 hours
Module Display Brightness Uniformity	<3%
Earth Leakage Current	<3 mA
Protective Grade	IP65 Front / IP54 Back
Temperature-operating	-20°C ~ 65°C
Humidity-operating	10% ~ 95%



Premium Power Supply



ISO standard power supply with FCC CE standard

Features

- Withstand 300VAC surge input for 5 second
- Protections : Short circuit / Overload / Over voltage / Over temperature
- Forced air cooling by built-in DC fan
- Built-in cooling Fan ON-OFF control
- 1U low profile
- Withstand 5G vibration test
- LED indicator for power on
- 100% full load burn-in test
- High operating temperature up to 70°C
- Operating altitude up to 5,000 meters
- High efficiency, long life and high reliability

