



Festica Series

P1.9, P2.6, P2.9, P3.9, P4.8

Cost Efficient Indoor LED for Rental and Fixed Installation



◀ Super light

40% lighter than the traditional iron cabinet
Significant cost saving

Double Cover Lock ▶

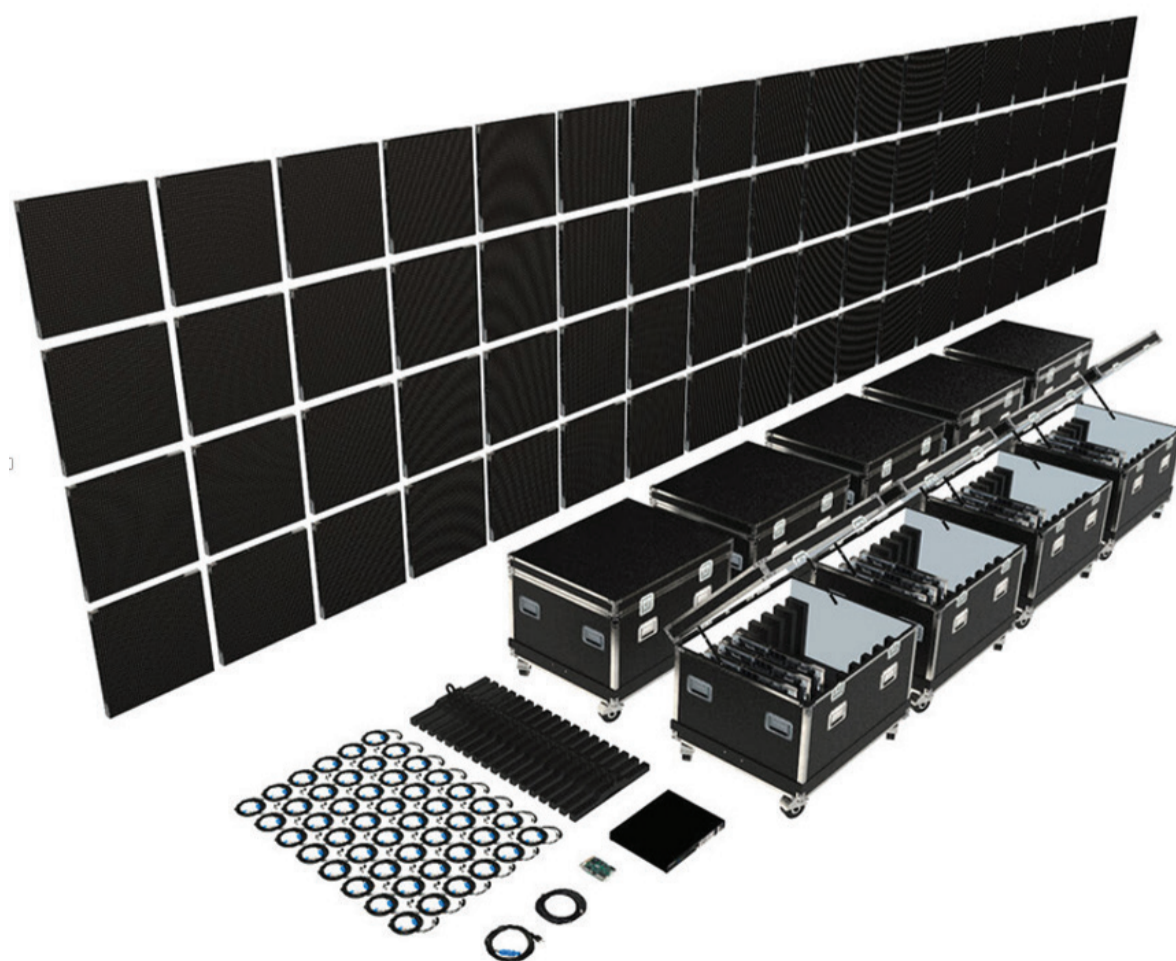
Suitable for curved splice



◀ Water Proof Design

Indoor/Outdoor compatible IP65

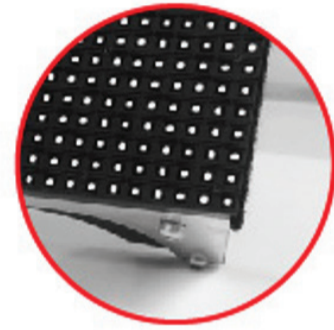
(optional for IP65 model, indoor standard is IP30)



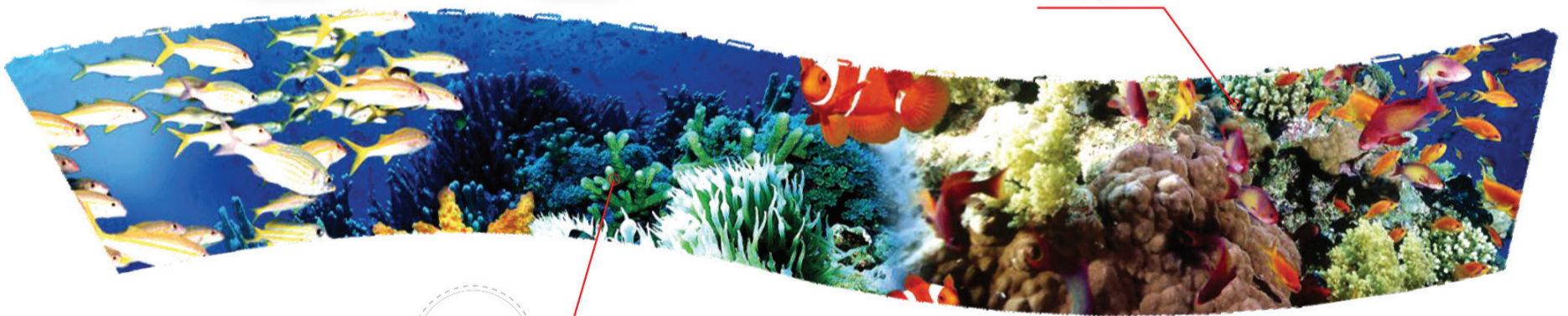
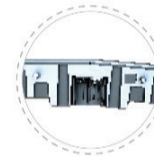


The product has a full front/rear maintenance design, and the maintenance efficiency is increased by more than 5 times; innovative and practical cabinet handles, single-person operation, and more convenient hoisting and installation.

The box body adopts anti-collision + pad anti-collision design, which effectively protects the module from damage, making installation and transportation safer.



Outer Arc 5°



Inner Arc 5°



Festica Series

Festica Series					
Pixel pitch	1.9	2.6	2.9	3.9	4.8
Pixel density (m ²)	262,144	147,456	112,896	65,536	43,264
Type	SMD1515	SMD2121	SMD2121	SMD2121	SMD2121
Cabinet size (mm*mm*mm)	500*500*73	500*500*73	500*500*73	500*500*73	500*500*73
				500*1000*73	500*1000*73
Module size (mm)	250*250	250*250	250*250	250*250	250*250
Cabinet weight (kg)	6.8	6.8	6.8	6.8	6.8
Cabinet resolution (px*px)	256*256	192*192	168*168	128*128	104*104
				128*256	104*208
Cabinet material	Die-casting Aluminum	Die-casting Aluminum	Die-casting Aluminum	Die-casting Aluminum	Die-casting Aluminum
Horizon/Vertical viewing angle (°)	160/200				
Brightness (nits)	600-1000	800-1000	800-1000	800-1000	800-1000
Gray scale	16				
Refresh rate (Hz)	3840	3840	3840	1920-3840	1920-3840
Maximum Power Consumption (W/m ²)	400				
Average Power Consumption (W/m ²)	120				
Voltage (V)	AC 110-240				
Protection level (Front and Back)	IP30				
Use environment	Indoor				



Super light



Ultra-thin



Fast heat dissipation



Anti-interference



high strength



Easy to install



High precision



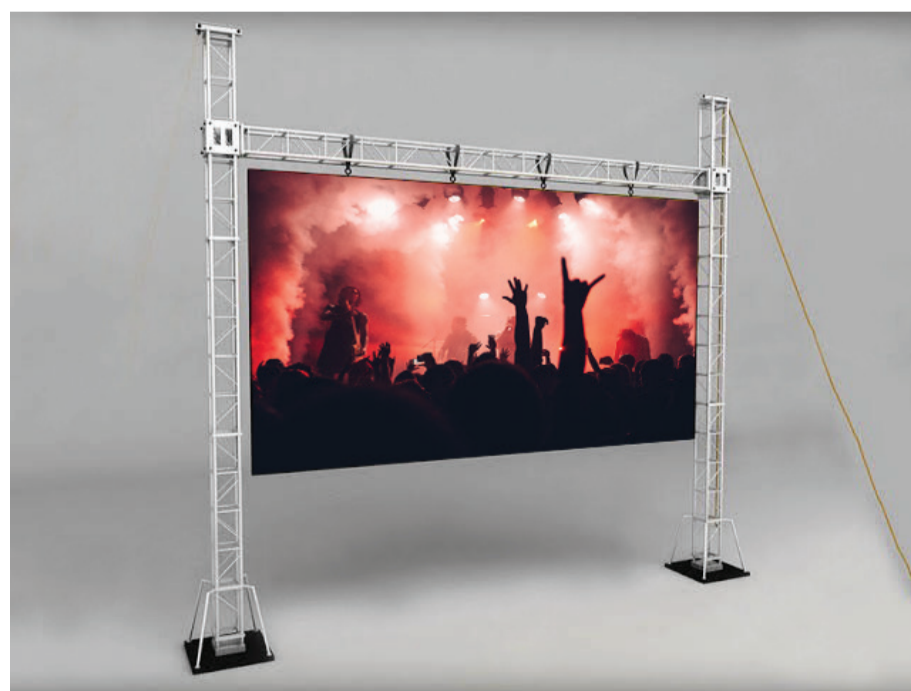
Strong versatility



Easy to maintain



affordable



CALKiN

1006/429 B Floor Master View Executive Place
Charoen Nakorn Road, Khlongsan, Bangkok 10600
Tel: 02-862-5459