

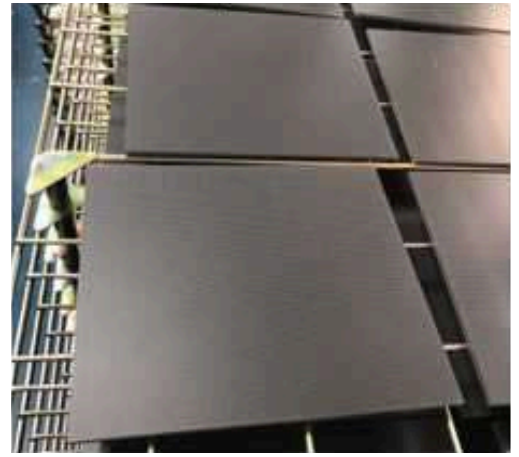
# Glacier Slim (GOB)

Super Thin Cabinet 30mm  
Super Fine Pitch P0.9 - P2.5

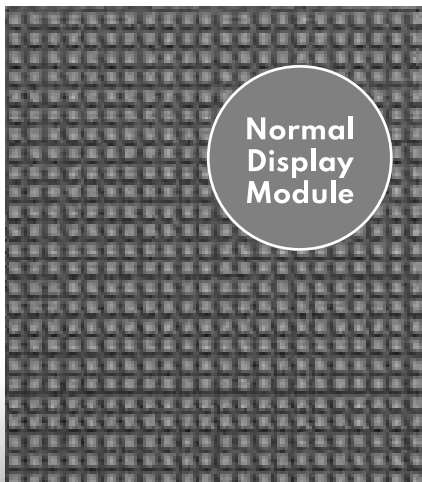
The most durable fine pitch LED with all GOB coating  
Native 16:9 ratio, Anti-lamp collision, Moisture/ dust proof  
Recommended for Broadcasting, Auditorium, Management War Room

## GOB (Glue On Board)

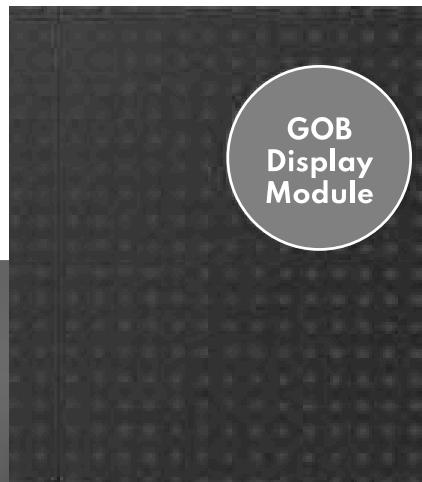
- The major problem in small-pitch display is its fragile tiny LED. In small SMD lamp the soldering pad is very small, a little force could cause the lamp damage and fell off, especially the LEDs located on the edge of the cabinet and the four corners that are the hardest-hit areas during the moving and installation. Once the lamp is broken, maintenance is very difficult and the cost is high.



No Protection



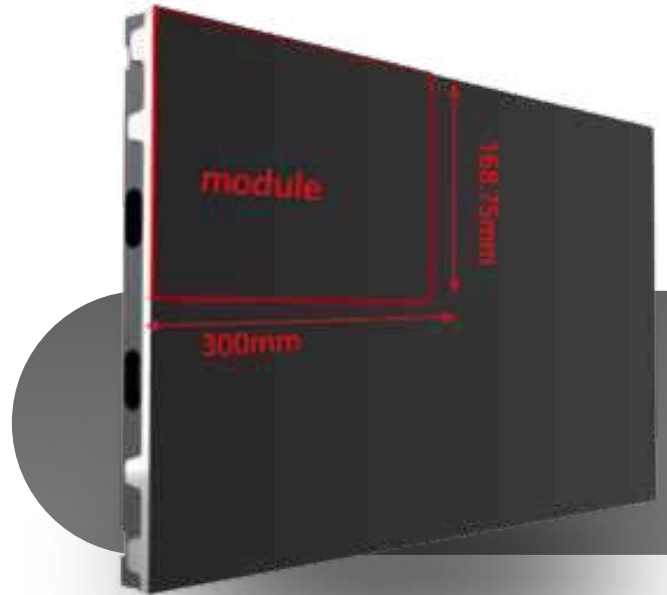
High Protection after gluing



- GOB is Glue on board to get high protection led display, which is a new technology, an analogy as module encapsulation. It is working on the whole display module, by using a patented transparent epoxy glue covering thousands of small LED lamps. (The module getting the special shield on its surface.)

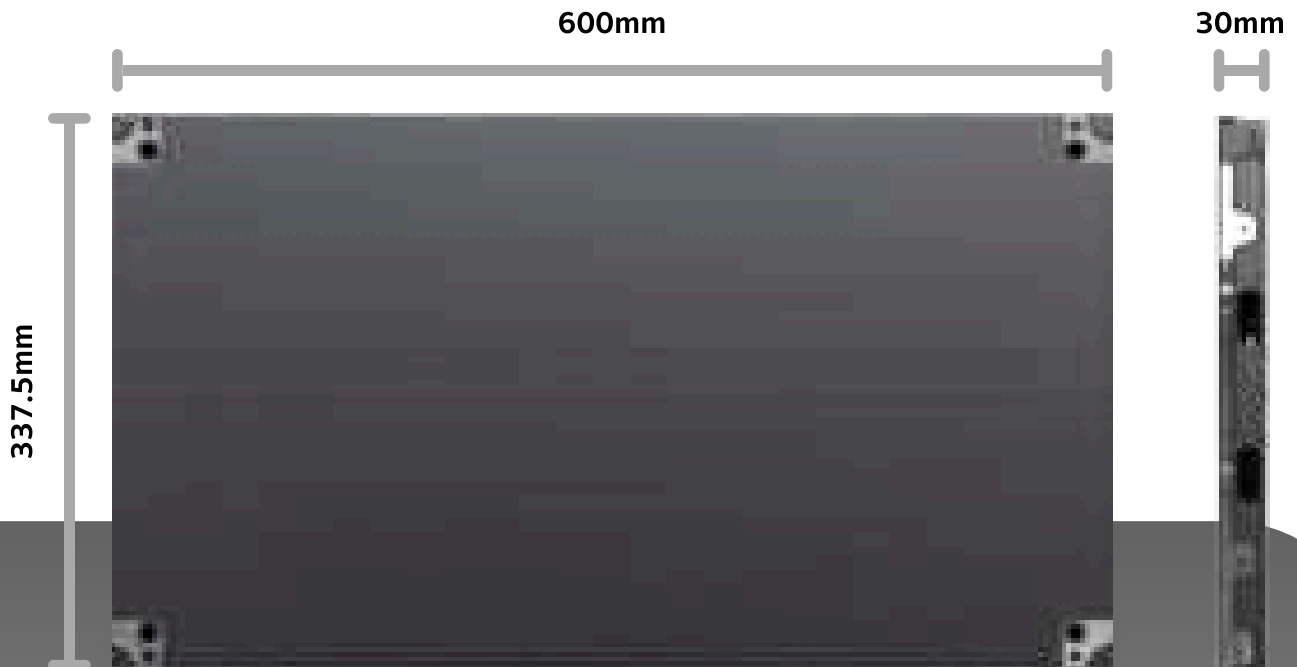
## Cabinet Detail

- 2x2 module layout design for better flatness and seamless splicing between modules. Also easier for installation and maintenance.
- Ultra thin of 30mm cabinet can be mounted directly to the wall without frame. More elegant and sleek architecture can be designed with this Glacier Slim screen.
- 16:9 aspect ratio sizing helps creating native resolution HD/2K/4K/8K led video wall possible.



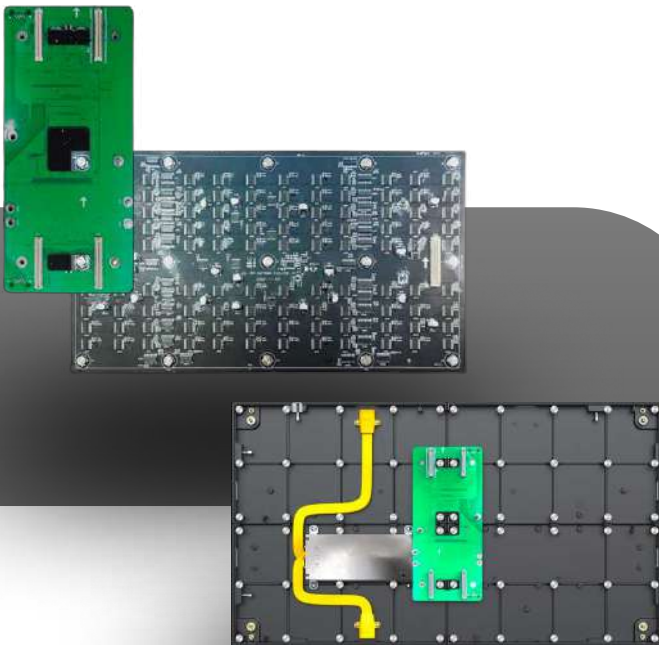
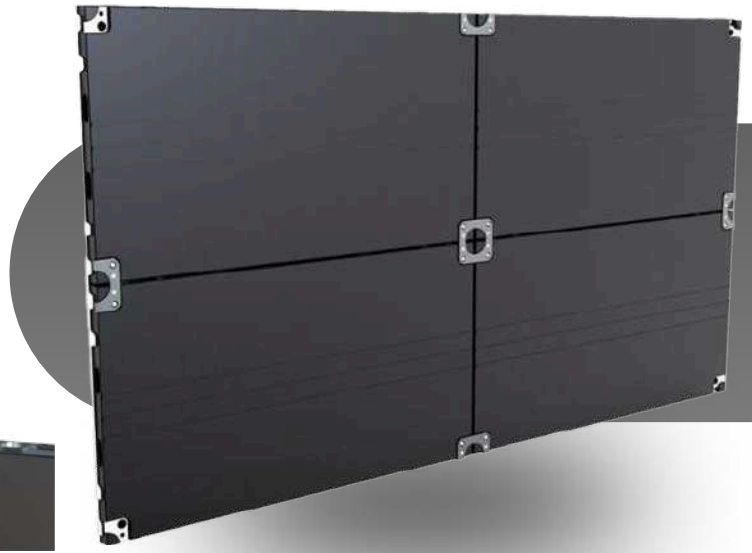
## Dimension

- Cabinet size: 600\*337.5\*30mm
- Module size: 300\*168.75mm
- Cabinet weight: 3.8kg



## Die-casting alloy connecting plate

- High precision die-casting aluminum connecting plate
- Sink-in cabinet connection bracket does not increase screen thickness



## Hub Connection

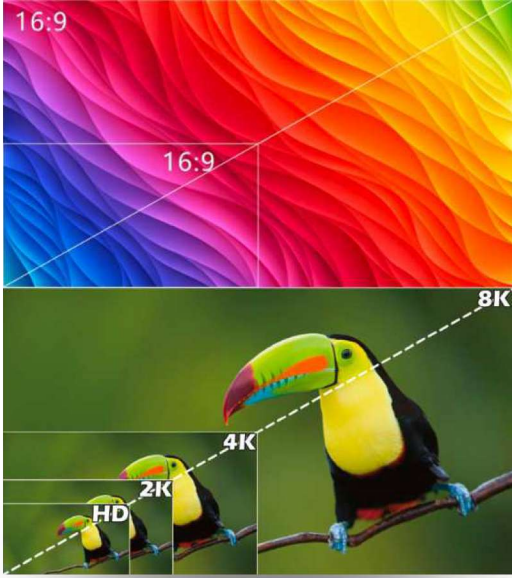
- Direct connection design, signal transmission is stable and reliable
- No cables connection to the modules inside cabinet help increasing heat dispersion and cooling down the lamp average temperature

## Front maintenance

- Quick magnetic front maintenance design
- Easy installation

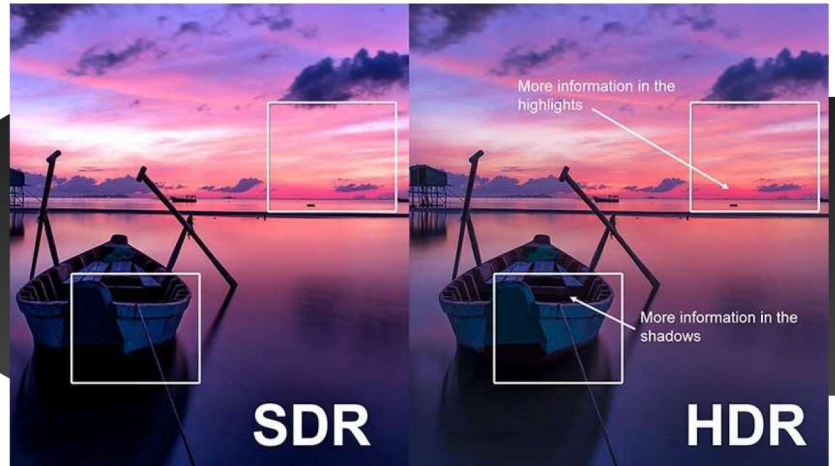


# Superior Native 16:9 Video Quality



- The cabinet aspect ratio is 16:9
- Native Resolution Pixel in 16:9 ratio provides clear and sharp video quality without upscaling nor interpolation effect
- Customizable at 1080p,2K,4K,8K or other resolution rates
- Intelligent color accuracy assessment, eliminate color deviation, highly reproduce the true colors of natural scenes and achieve high color fidelity

- Enable LED display achieve full 2K/4K/8K displaying effect without compression
- HDR high image quality, restore real vision living likeness details.



16:9 aspect ratio cabinet size



- 16:9 aspect ratio cabinet size
- 160° super wide viewing angle

- High refresh rate frequency  $\geq 3840$  Hz no flickering display in photo filming or broadcasting
- Constant current lamp driving method increase brightness and color saturation uniformity





## Redundant Power Supply / Signal (Optional)

Gracier Slim Series have a built-in capability for redundant power supplies— therefore, if one power supply fails on those switches, the other power supply takes over. And with redundant signal capable, summit redundant series signal will bypass the fail unit to avoid the chain series blackout which is a common issue on normal LED system

## Application



# Glacier Slim (GOB) Specification

	P0.9	P1.25	P1.56	P1.8	P2.5
Pixel Pitch (mm)	0.9375mm	1.25mm	1.56mm	1.8mm	2.5mm
LED Type	MINI LED	SMD1010	SMD1212	SMD1515	SMD1515
Module Resolution (dots)	320x180	240x135	192x108	160x90	120x68
Driving Mode	1/60scan	1/45scan	1/36scan	1/45scan	1/25scan
Module Pixels (dots)	57,600	32,400	20,736	14,400	8,160
Module Size (mm)	300x168.75				
Cabinet Size (mm)	600x337.5x30				
Cabinet Resolution (dots)	640x360	480x270	384x216	320x216	240x135
Pixel Density (dots/m <sup>2</sup> )	1,137,777	640,000	409,600	284,444	160,000
Best Viewing Distance (m)	>=0.9	>=1.2	>=1.5	>=1.8	>=2.5
Brightness (nits)	350	400	500	800	1200
Internal Connection Type	Hub Connection				
IP Grade	IP43				
Refresh Rate	1,920 Hz ~ 3,840 Hz (depends on IC driver solution)				
Gray Scale	14 bits ~ 22 bits (depends on IC driver and controller solution)				
Viewing Angle	H160°/V160°	H160°/V160°	H110°/V110°	H110°/V110°	H110°/V110°
Maximum Power Consumption	400W/m <sup>2</sup>	400W/m <sup>2</sup>	320W/m <sup>2</sup>	400W/m <sup>2</sup>	350W/m <sup>2</sup>
Average Power Consumption	130W/m <sup>2</sup>	130W/m <sup>2</sup>	105W/m <sup>2</sup>	130W/m <sup>2</sup>	110W/m <sup>2</sup>
Input Voltage	AC110V~AC220V @ 50Hz/60Hz				
Operating Temperature	-20°C ~ 50°C				
Operating Humidity	10% ~ 90%				
Cabinet Material	Die-cast Aluminum				
Cabinet Weight	3.8kg/panel				
Operating System	Windows (Win7, Win10, etc.)				
Contrast Ratio	5000:1				

 CE Certified  ISO 9001  ISO 14001