

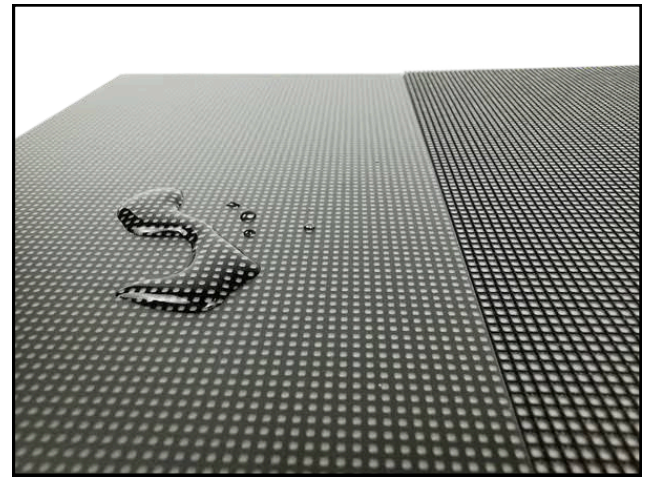
Glacier Slim (COB)

Super Thin Cabinet 30mm
Super Fine Pitch P0.9 - P1.56

The most durable fine pitch LED with COB Flip-Clip
Native 16:9 ratio, Anti-lamp collision, Moisture/ dust proof
Recommended for Broadcasting, Auditorium, Management War Room

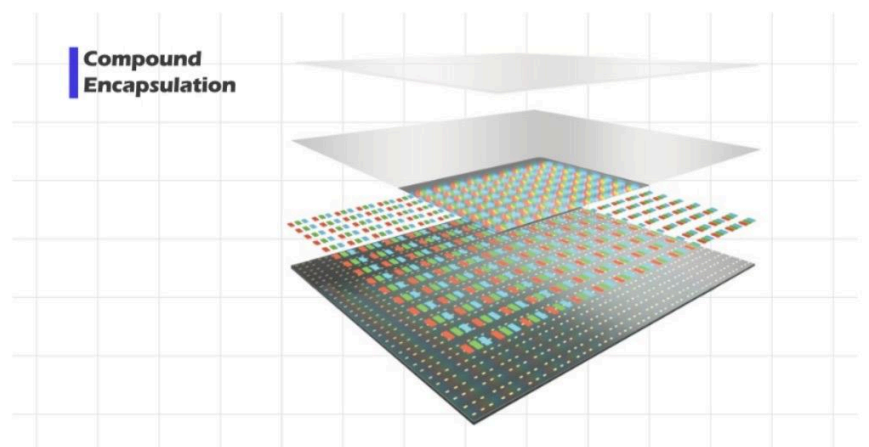
COB (Chip On Board)

A new revolution on LED screen technology. COB using the laying technique to put its light chip directly on to PCB board, then coat it with epoxy layer as a whole piece. This COB LED could provide the same level of protection from moisture, impact or surface shield while can give the clear color effect from just one later coating (not double coating like old GOB screen)

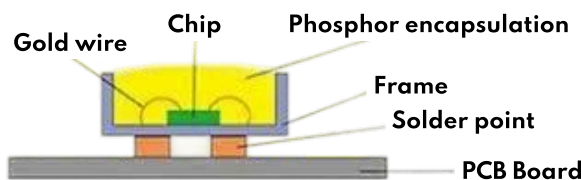


Advanced Display Technology

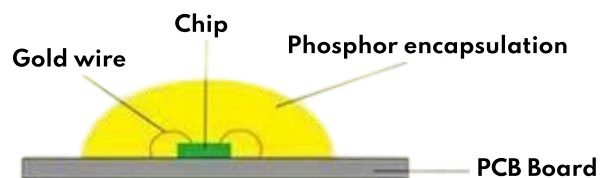
Full Flip Chip Led Technology, Surface epoxy encapsulation technology improves the light scattering phenomenon, ensures color uniformity, and effectively inhibits the generation of Moire fringes.



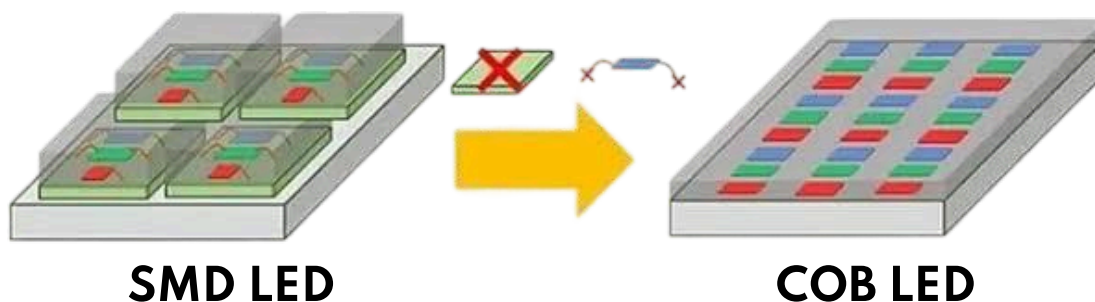
COB screen Flip-Chip technology would have wider viewing angles/ higher brightness and great contrast. It is the best option for small to tiny pitch size screen as small as 0.4mm.



SMD led strip light



COB led strip light

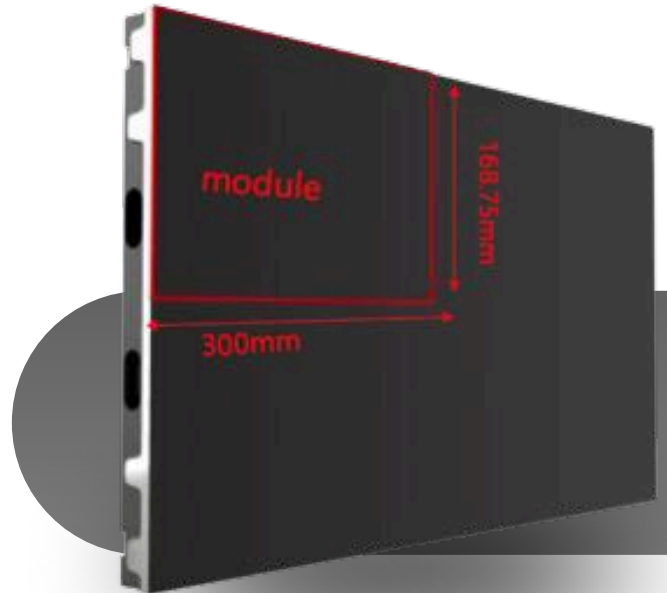


SMD LED

COB LED

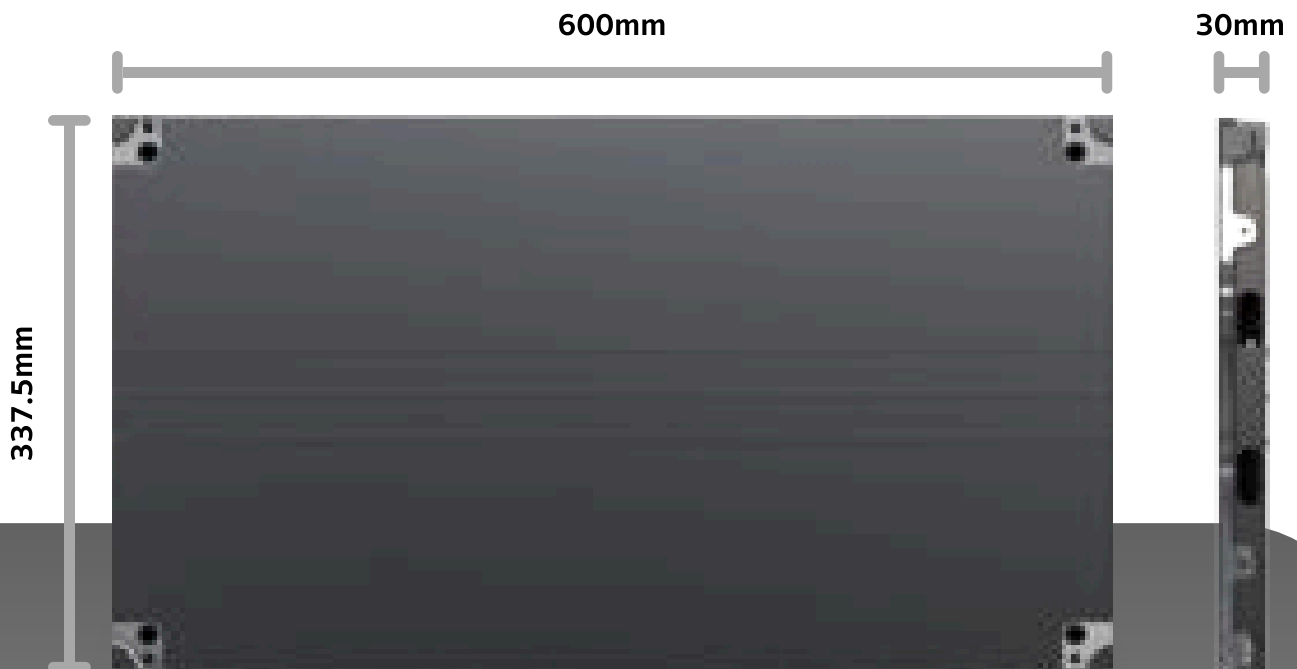
Cabinet Detail

- 2x2 module layout design for better flatness and seamless splicing between modules. Also easier for installation and maintenance.
- Ultra thin of 30mm cabinet can be mounted directly to the wall without frame. More elegant and sleek architecture can be designed with this Glacier Slim screen.
- 16:9 aspect ratio sizing helps creating native resolution HD/2K/4K/8K led video wall possible.



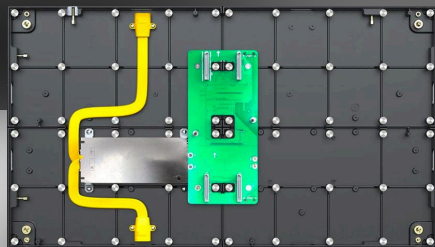
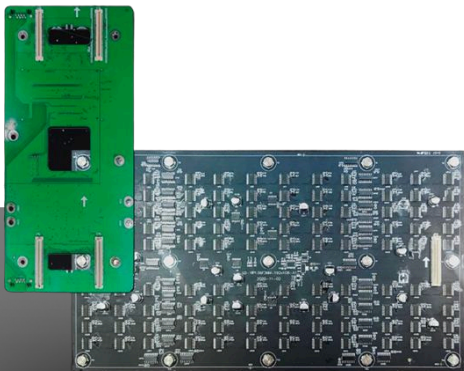
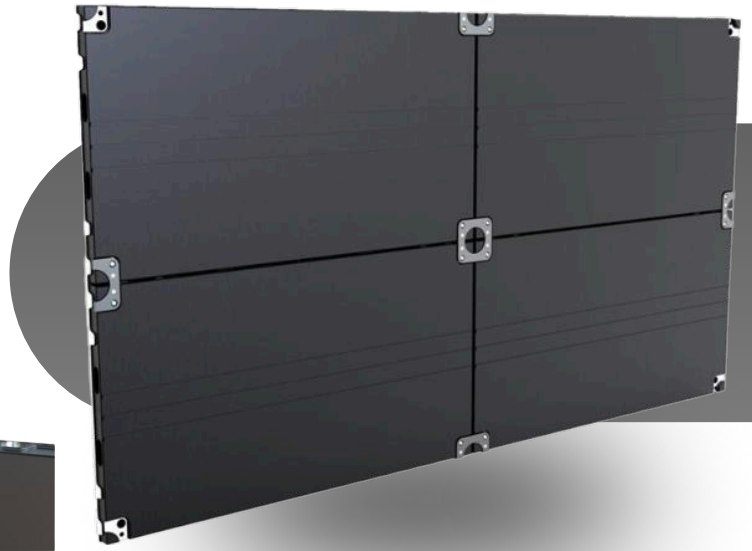
Dimension

- Cabinet size: 600*337.5*30mm
- Module size: 300*168.75mm
- Cabinet weight: 3.8kg



Die-casting alloy connecting plate

- High precision die-casting aluminum connecting plate
- Sink-in cabinet connection bracket does not increase screen thickness

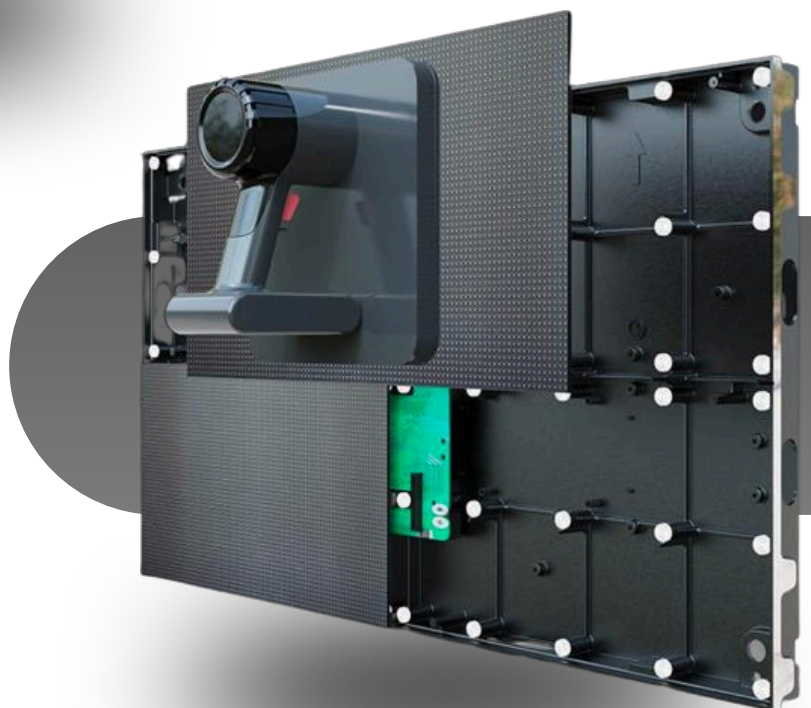


Hub Connection

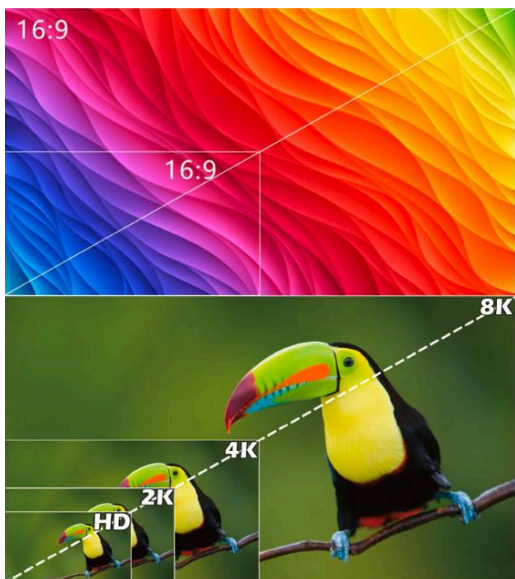
- Direct connection design, signal transmission is stable and reliable
- No cables connection to the modules inside cabinet help increasing heat dispersion and cooling down the lamp average temperature

Front maintenance

- Quick magnetic front maintenance design
- Easy installation

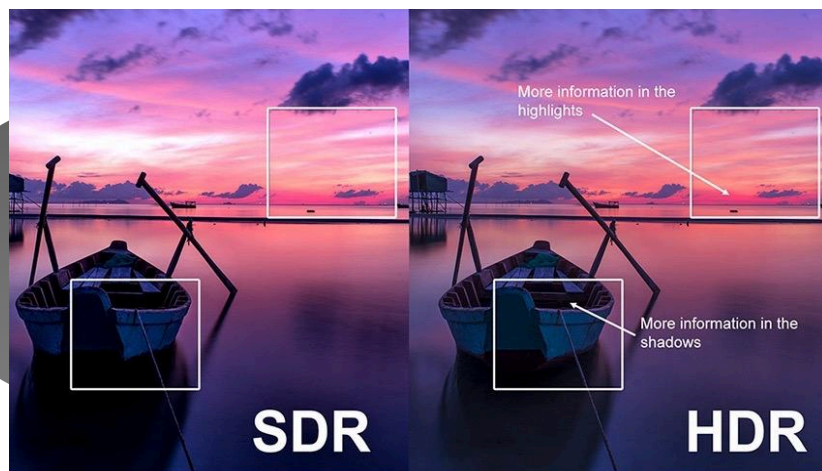


Superior Native 16:9 Video Quality



- The cabinet aspect ratio is 16:9
- Native Resolution Pixel in 16:9 ratio provides clear and sharp video quality without upscaling nor interpolation effect
- Customizable at 1080p, 2K, 4K, 8K or other resolution rates
- Intelligent color accuracy assessment, eliminate color deviation, highly reproduce the true colors of natural scenes and achieve high color fidelity

- Enable LED display achieve full 2K/4K/8K displaying effect without compression
- HDR high image quality, restore real vision living likeness details.



16:9 aspect ratio cabinet size



- 16:9 aspect ratio cabinet size
- 160° super wide viewing angle

- High refresh rate frequency ≥ 3840 Hz no flickering display in photo filming or broadcasting





Redundant Power Supply / Signal (Optional)

Gracier Slim Series have a built-in capability for redundant power supplies— therefore, if one power supply fails on those switches, the other power supply takes over. And with redundant signal capable, summit redundant series signal will bypass the fail unit to avoid the chain series blackout which is a common issue on normal LED system

Application



Glacier Slim (COB) Specification

	P0.9	P1.25	P1.56
Pixel Pitch (mm)	0.9375mm	1.25mm	1.5625mm
LED Type	COB Flip-Chip		
Module Resolution (dots)	320x180	240x135	192x108
Driving Mode	1/60scan	1/45scan	1/36scan
Module Pixels (dots)	57,600	32,400	20,736
Module Size (mm)	300x168.75		
Cabinet Size (mm)	600x337.5x30		
Cabinet Resolution (dots)	640x360	480x270	384x216
Pixel Density (dots/m2)	1,137,777	640,000	409,600
Best Viewing Distance (m)	>=0.9	>=1.2	>=1.5
Brightness (nits)	800		
Internal Connection Type	Hub Connection		
IP Grade	IP43		
Refresh Rate	3,840 Hz		
Gray Scale (Processing depth)	14 bits		
Viewing Angle	H160°/V160°		
Maximum Power Consumption	400W/m2	400W/m2	320W/m2
Average Power Consumption	130W/m2	130W/m2	105W/m2
Input Voltage	AC110V~AC220V @ 50Hz/60Hz		
Operating Temperature	-20°C ~ 50°C		
Operating Humidity	10% ~ 90%		
Cabinet Material	Die-cast Aluminum		
Cabinet Weight	3.8kg/panel		
Operating System	Windows (Win7, Win10, etc.)		
Signal Source Compatibility	DVI, HDMI1.3, DP1.2, SDI, HDMI2.0, etc.		

 CE Certified  ISO 9001  ISO 14001