



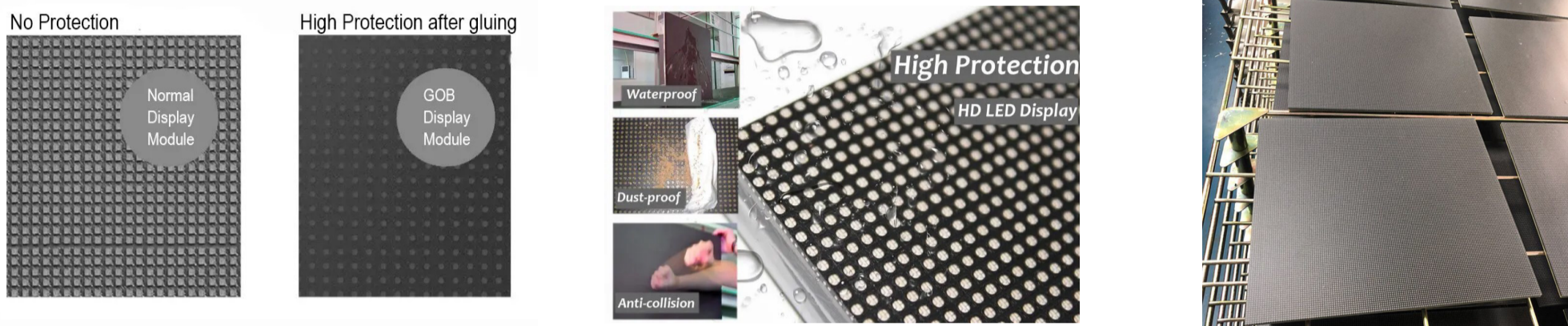
# Gracier Pro (GOB)

**P1.2 - P2.5 The most durable fine pitch LED**  
**Anti-lamp collision, Moisture, Dust proof**  
**Native 16:9 ratio**

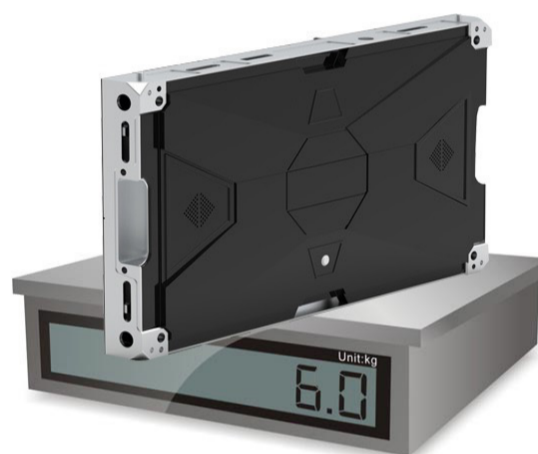
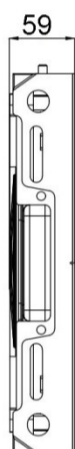
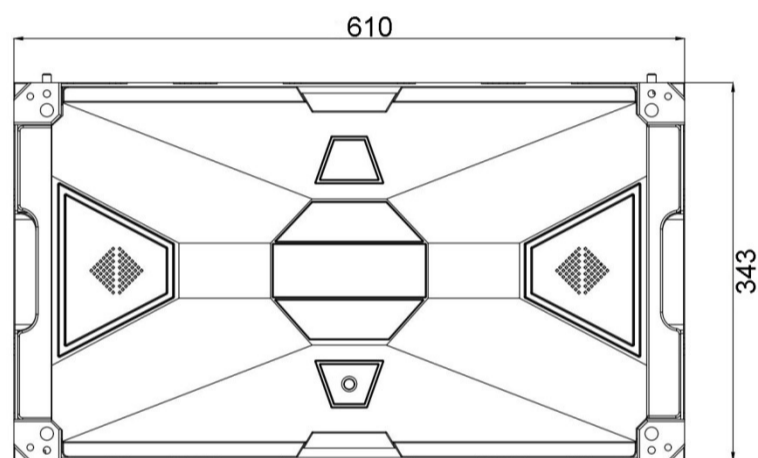
## ◆ GOB (Glue on Board)

The biggest problem with the use of small-pitch displays is that it is very easy to damage the tiny LED. Because the SMD lamp is too small and the soldering pad is very small, a little force will crash the lamp, especially the LEDs located on the edge of the cabinet and the four corners that are the hardest-hit areas during the moving and installation. Once the lamp is broken, maintenance is very difficult and the cost is high.

GOB is Glue on board to get high protection led display, which is a new technology, an analogy as module encapsulation. It is working on the whole display module, by using a patented transparent glue covering thousands of small LED lamps. (The module getting the special shield on its surface.)



## ◆ Ultra Light Weight and Thin Die casting Aluminum Cabinet



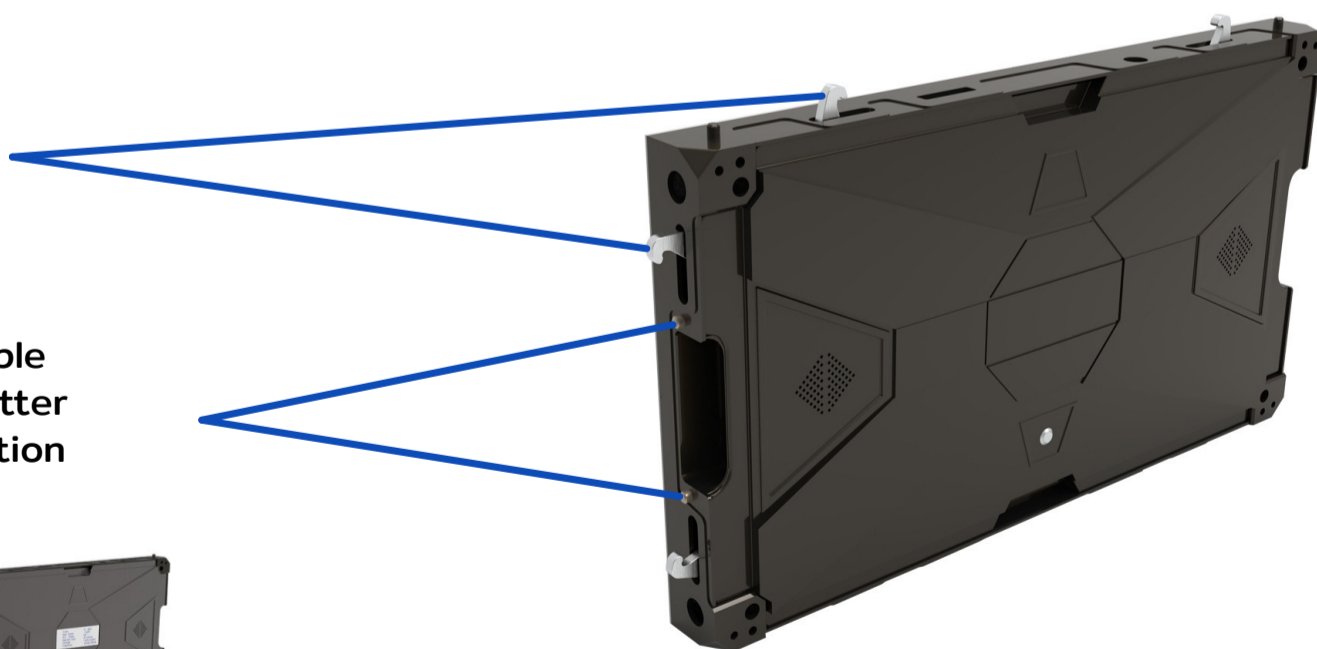
Cabinet thickness include module is only 59 mm

Cabinet weight is only 6 kgs

## ◆ Join cabinet together

Internal lockers enable join cabinets together quickly and tightly

Location pins are also available at side of the cabinet for better alignment and easier installation

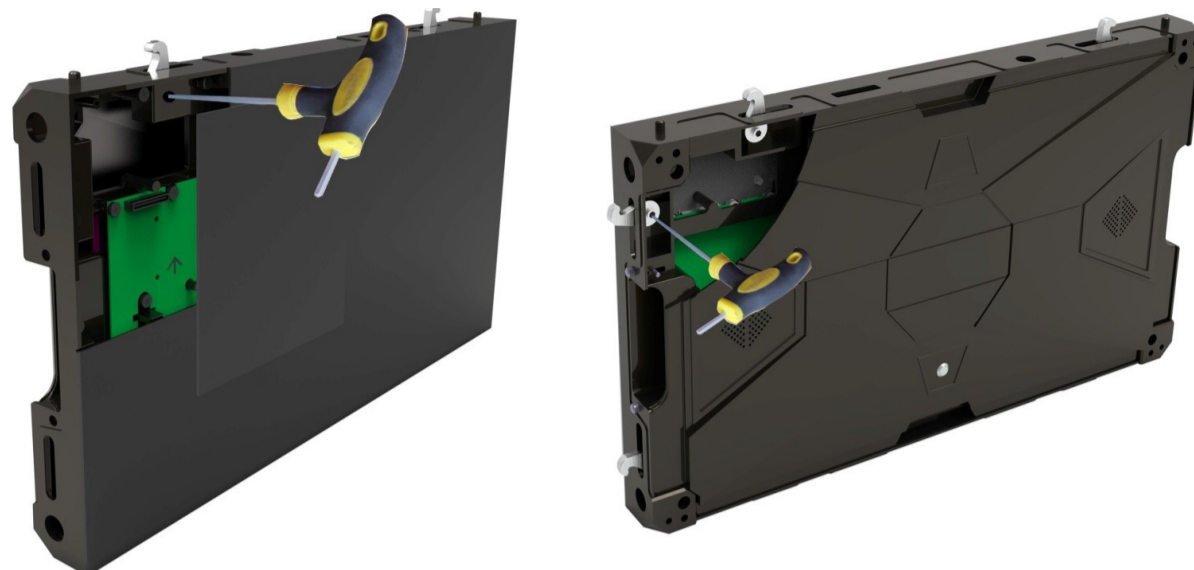


Precise die casting aluminum cabinet with internal lockers make seamless splicing joint

Signal cables and power cables are through inside of the cabinets. No external cables which has more stability



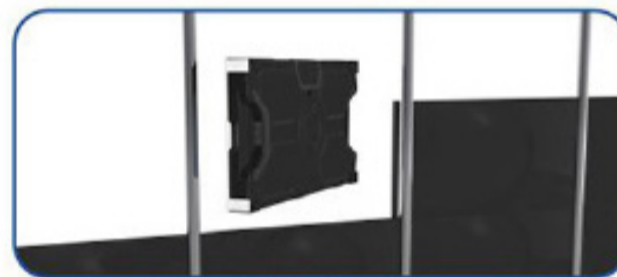
## ◆ Installation



Can lock cabinets from both front and rear side with tool



From front installation



From behind installation

Support both front and rear side installation

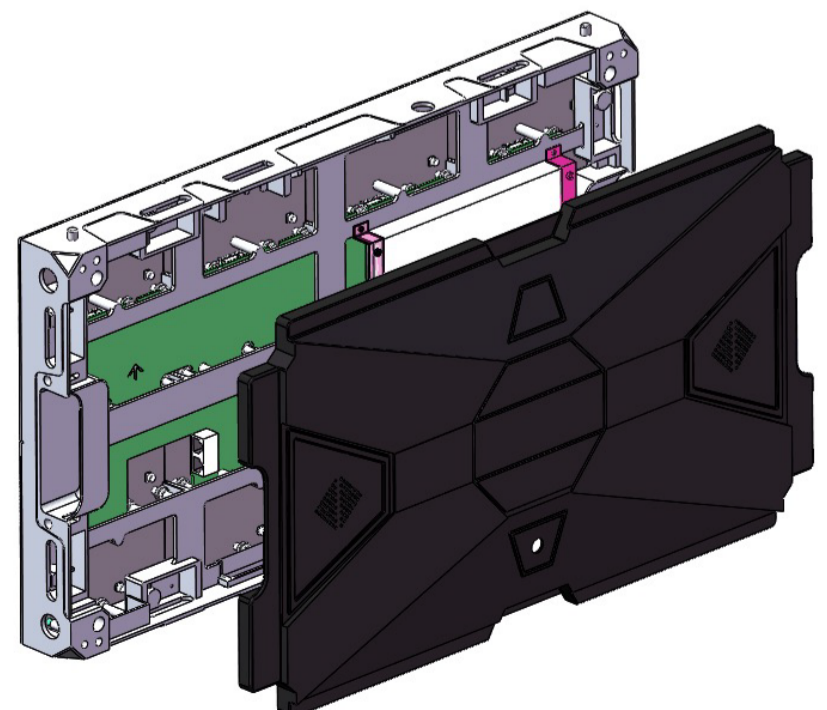
For rear side installation, do not need remove modules



Magnetic modules support both front and rear service  
Receive card, power supply can be serviced from front as well

The back door can be opened and do signal cable and power cable connection from rear side without removing any modules for rear side installation

Internal power cable connector  
It is very convenient to finish power cables connection between cabinets quickly







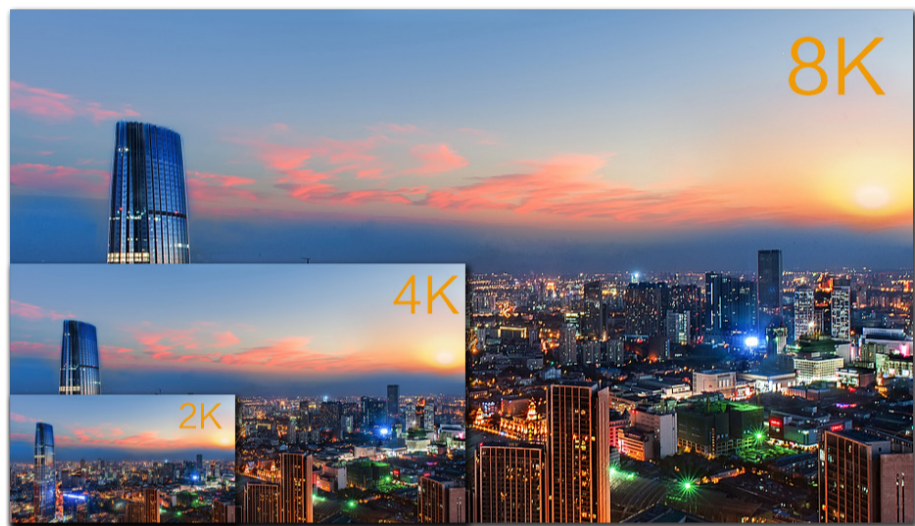
160° super wide viewing angle



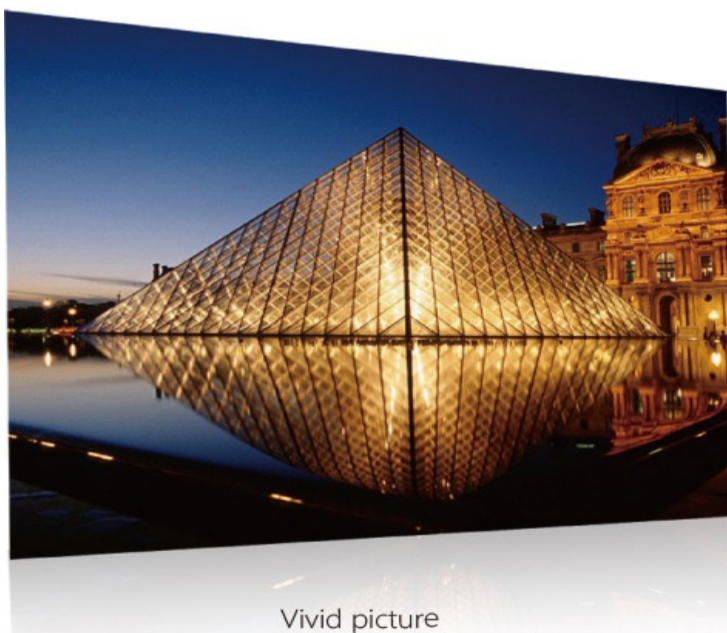
Can have clear picture with sharp viewing angle



16:9 aspect ratio cabinet size

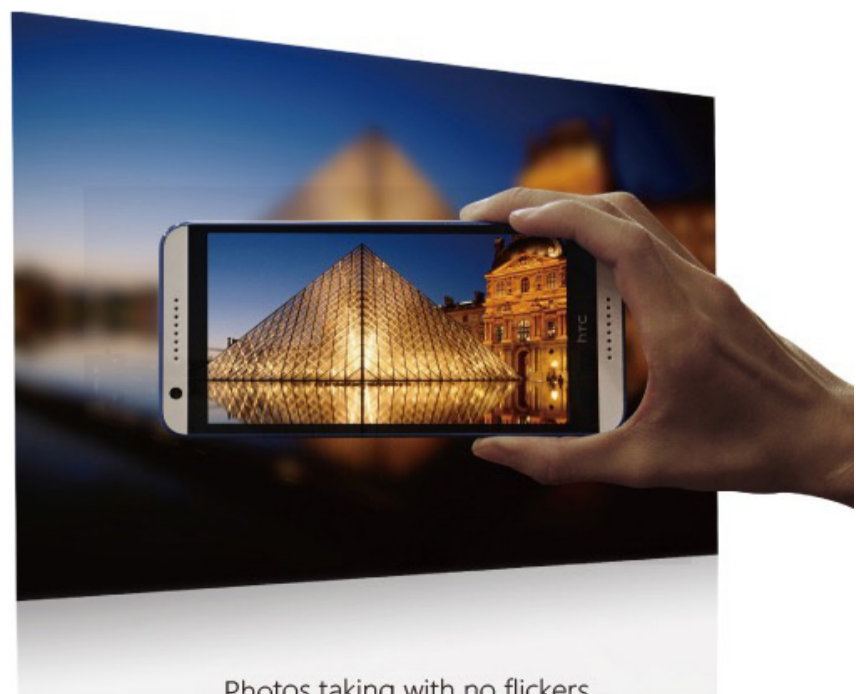


It enables LED led display achieve full 2K/4K/8K displaying effect without compression.



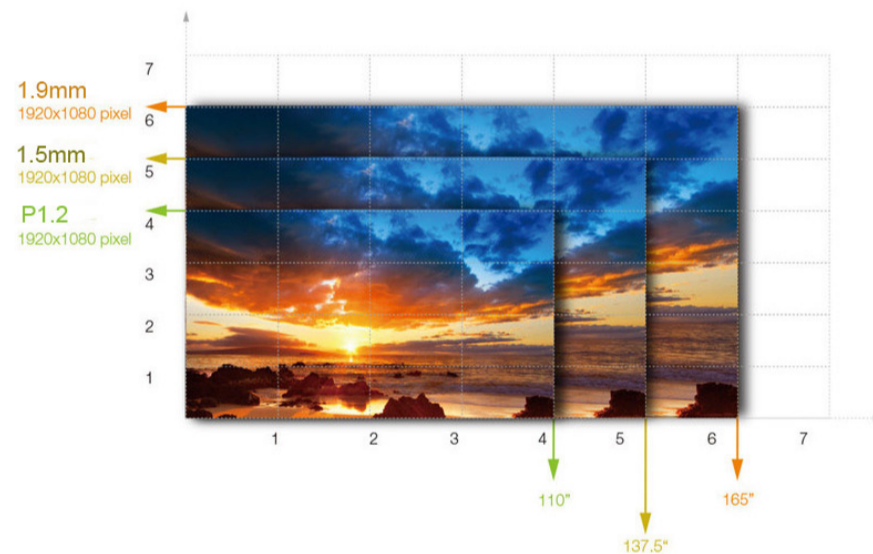
Low brightness with high grey level make the display images more vivid.

High refresh frequency  $\geq 3840\text{hz}$  makes the display with no flickers when take photos



# Gracier Pro (GOB)

Gracier Pro PARAMETER				
Pixel Pitch	P1.2	P1.5	P1.9	P2.5
LED Type	SMD1010	SMD1010	SMD1515	SMD2020
Pixel Density/m <sup>2</sup>	619,360dots	396,390dots	275,270dots	146,810dots
Module Dimension	152.43*171.54	152.43*171.54	152.43*343.08	152.43*343.08
Cabinet Dimension	610*343mm	610*343mm	610*343mm	610*343mm
Cabinet Material	Die cast alu	Die cast alu	die cast alu	die cast alu
Cabinet weight	6kgs	6kgs	6kgs	6kgs
Maintenance way	Front/Rear	Front/Rear	Front/Rear	Front/Rear
Brightness	≥600nits	≥600nits	≥600nits	≥600nits
Refresh Rate	≥3,840Hz	≥3,840Hz	≥3,840Hz	≥3,840Hz
Scan Mode	1/30	1/27	1/30	1/32
Gray Scale	16bit	16bit	16bit	16bit
Power consumption/m <sup>2</sup>	1050/350w/m <sup>2</sup>	760/255w/m <sup>2</sup>	700/235w/m <sup>2</sup>	570/190w/m <sup>2</sup>
Contrast	8,000:1	8,000:1	8,000:1	8,000:1
Viewing Angle	160°/160°	160°/160°	160°/160°	160°/160°
Input Voltage	AC110/240V	AC110/240V	AC110/240V	AC110/240V
Lifespan	≥100,000hrs	≥100,000hrs	≥100,000hrs	≥100,000hrs
MTBF	>10,000hrs	>10,000hrs	>10,000hrs	>10,000hrs
Ingress Protection	IP67 Front/ IP20 Back	IP67 Front/ IP20 Back	IP67 Front/ IP20 Back	IP67 Front/ IP20 Back
Working Environment	Indoor	Indoor	Indoor	Indoor



Cabinets Layout	2.5 mm	1.9 mm	1.5 mm	1.2 mm
1 x 1 = 2 cabinets	240*135	320*180	384*216	480*270
2 x 2 = 4 cabinets	480*270	640*360	768*432	960*540
3 x 3 = 9 cabinets	720*405	960*540	1152*648	1440*810
4 x 4 = 16 cabinets	960*540	1,280*720	1,536*864	1,920*1,080
5 x 5 = 25 cabinets	1,200*675	1,600*900	1,920*1,080	2,400*1,350
6 x 6 = 36 cabinets	1,440*810	1,920*1,080	2,304*1,296	2,880*1,620
7 x 7 = 49 cabinets	1,680*945	2,240*1,260	2,688*1,512	3,360*1,890
8 x 8 = 64 cabinets	1,920*1,080	2,560*1,440	3,072*1,728	3,840*2,160
9 x 9 = 81 cabinets	2,160*1,215	2,880*1,620	3,456*1,944	4,320*2,430
10 x 10 = 100 cabinets	2,400*1,350	3,200*1,800	3,840*2,160	4,800*2,700

Remark: Full HD = 1,920\*1,080    2K = 2,560\*1,440    4K = 3,840\*2,160



1006/429 B Floor Master View Executive Place  
Charoen Nakorn Road, Khlongsan, Bangkok 10600  
Tel: 02-862-5459