

LED Screen Lift Set

Built in with high quality LED screen

Easy to install and easy to use with easy access usb port, and compatible with most of the control systems.

- Adopt aluminum alloy box corrosion resistance leading industry standard, structure CNC carving process is lighter and thinner;
- Display 17.3-inch high-definition LCD screen, the best resolution state: 1920*1080, the back frame is made of pure metal aluminum alloy, the thickness is about 7mm, and the surface treatment is anode drawing
- The dual-motor drive (lift and elevation) of the display screen defaults to 15°, which can be customized to 30° ;
- The transmission structure is a guide rail pulley, the structure is stable and the noise is small;
- A reasonable tank chain wiring structure is used internally, and the machine will not show broken line jamming when it goes up and down;
- The panel keys are made of metal, with fine appearance and excellent texture, and long-term use will not reduce the key sensitivity;
- The panel is uniformly equipped with metal computer host buttons and USB data interface to enrich product functions;
- In addition to the screen and electronic components, the panel chassis and internal metal parts are made of aluminum alloy, which has strong corrosion resistance.
- Rich interface, panel: USB*1, start button*1; video input: VGA, HDMI; data transmission: USB*1, RS485 control interface: RJ45*4
- Dual motor drive (lift and elevation) defaults to 15°
- Product color: silver;
- Signal input:
 - (1) Support HDMI and VGA signal input;
 - (2) When there is only one signal, the screen automatically recognizes the signal;
 - (3) When two signals are input at the same time, the signal can be manually switched through the panel;
 - (4) When there is no signal, the screen automatically enters the power saving mode;
- Control method:
 - (1) Manual panel control;
 - (2) RS232 and RS485 control of the central control system;
- Working temperature: 0~45°C;
- Relative humidity: no more than 80% (20±5°C);
- Power requirements: voltage: AC220V, frequency 50/60HZ.

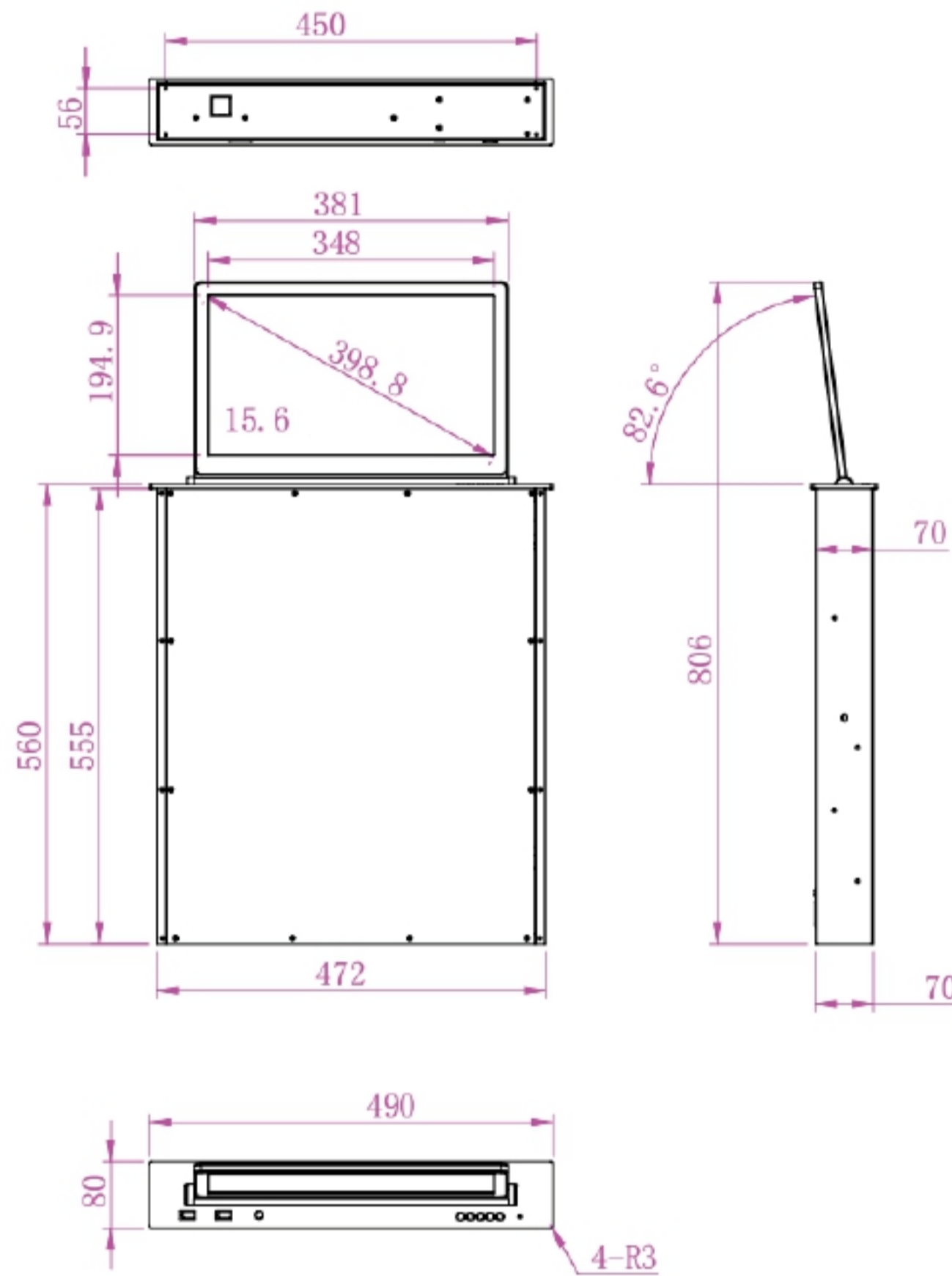


CE Certified

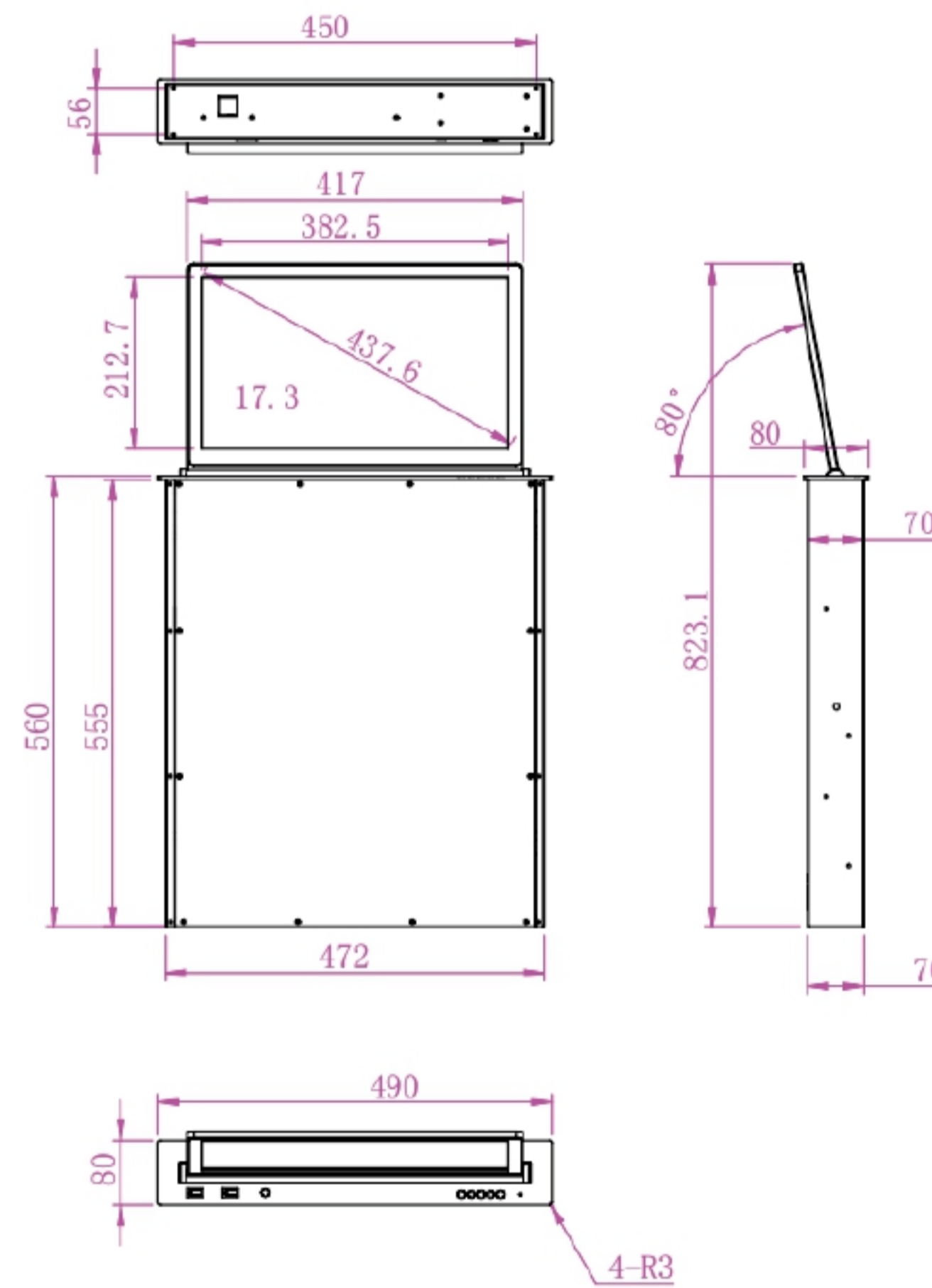
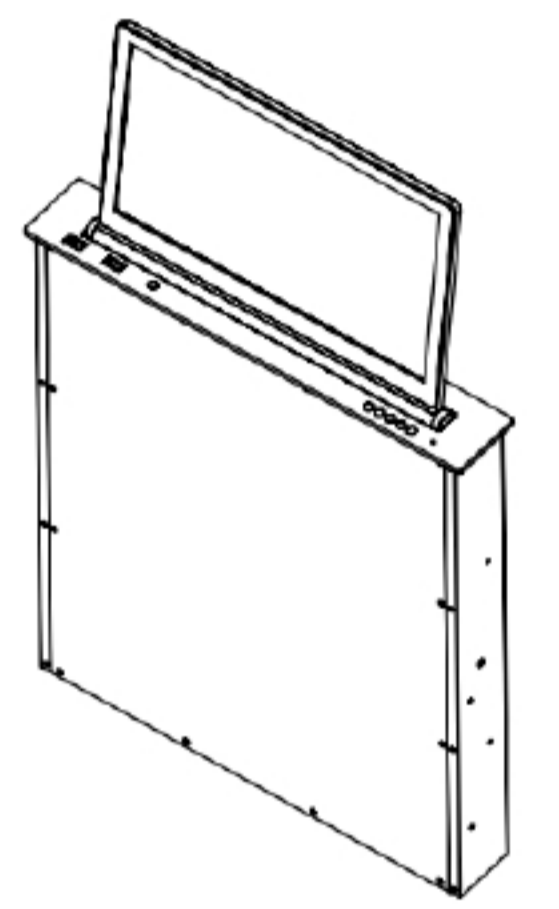


Specification

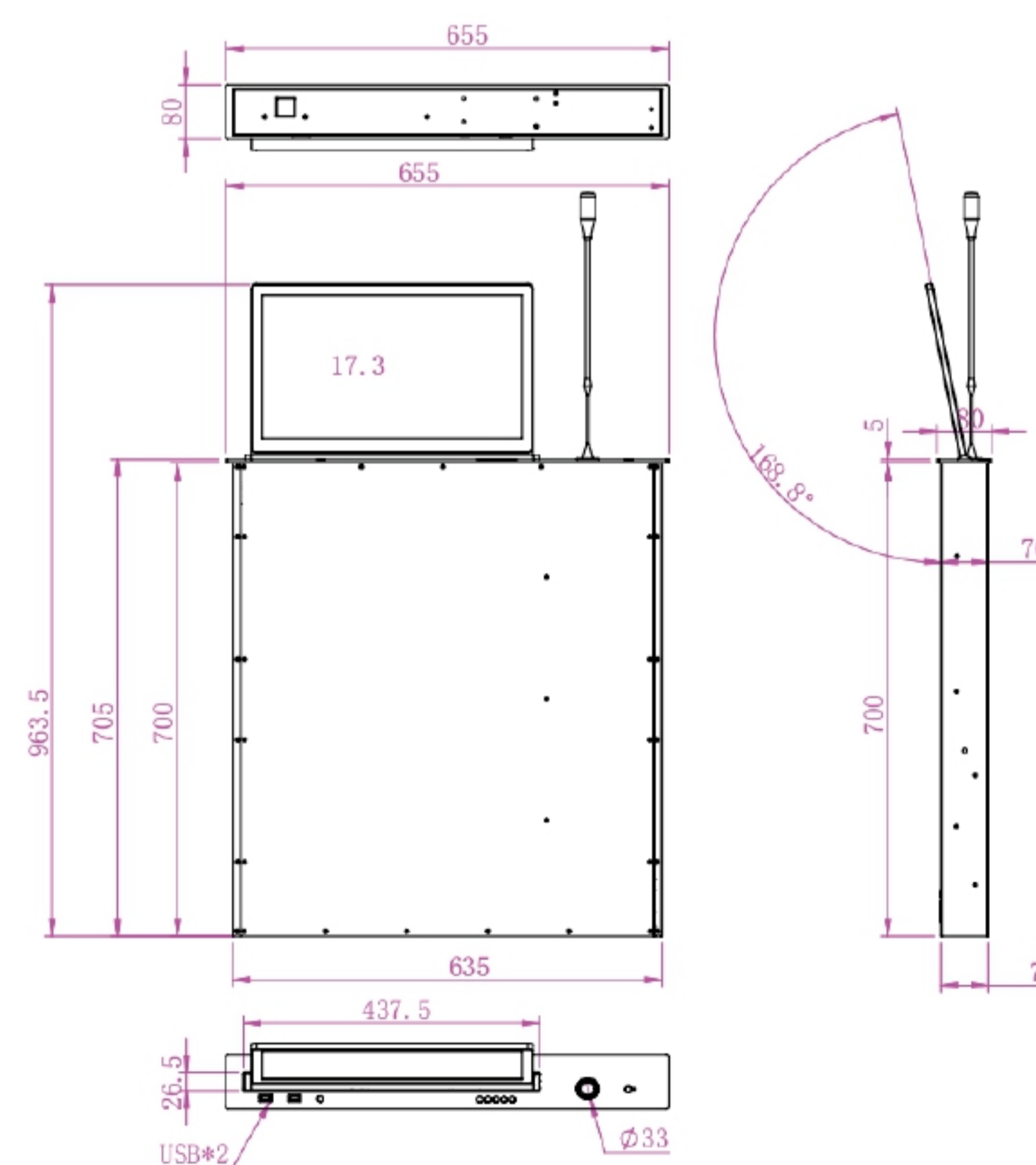
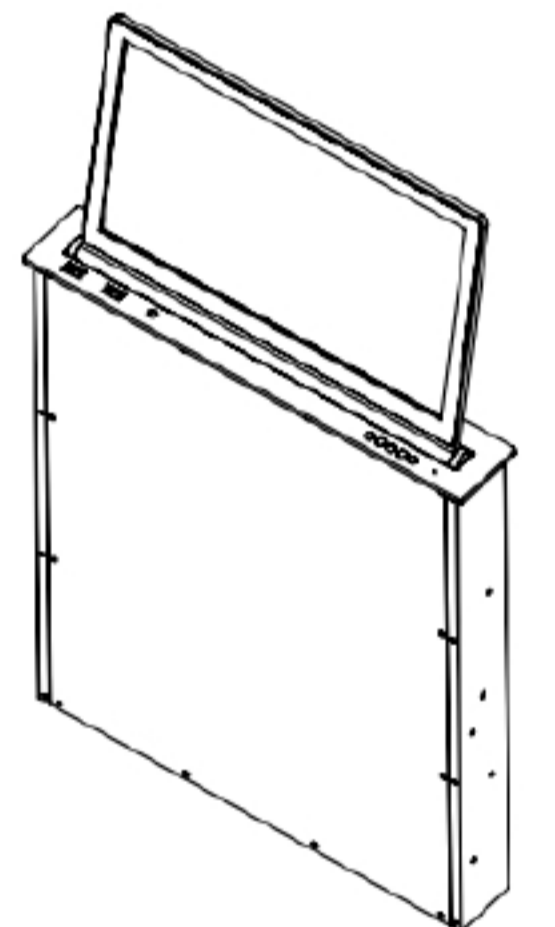
LED Screen Size	15.6" / 17.3"
Format	16:9
Resolution Ratio	1920x1080
Power Input	220~240 V/50 Hz
Signal Input	HDMI
Thickness of Top Plate	5 mm
Depth of Top Plate	80 mm
Adjustable Viewing Angle	15 degree
Gross Weight	16.5 kgs / 19 kgs



CA72015



CA72017



CA72017M

with Microphone



Available in Silver / Black