



PINNACLE Series

Indoor Front Maintenance

Ultra-thin LED P1.9 P2.5 P2.6 P2.9 P3.9

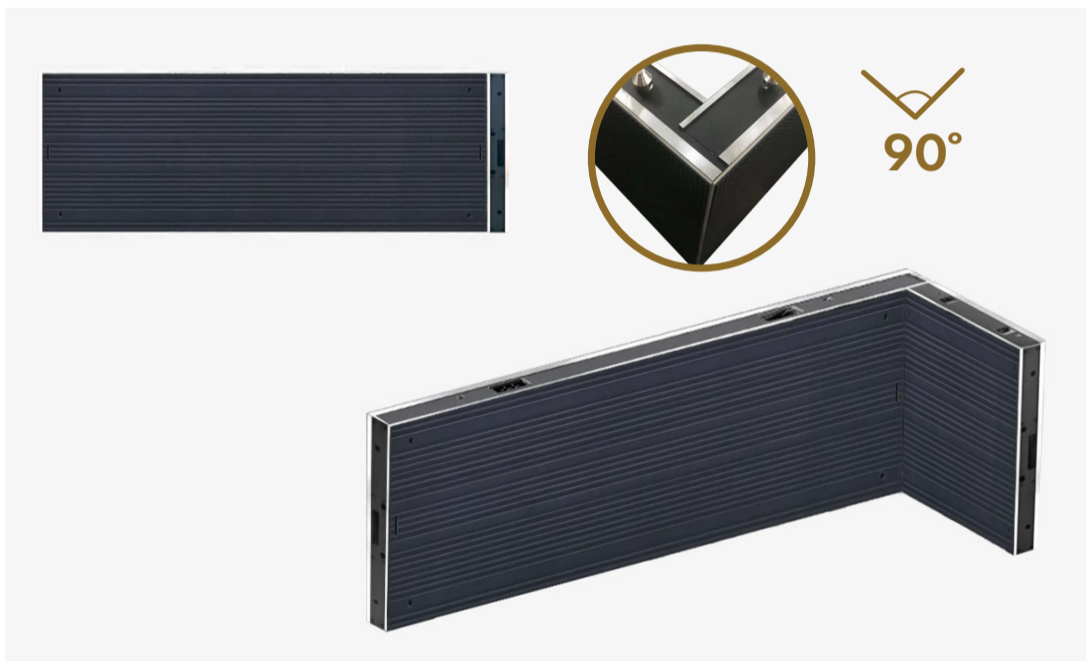
Flexible Structural Design for Installation

Multiple installation : Wall-mounted, Hosting,
Double-sided lifting, Shelf screen installation



Excellent Visual Performance

High refresh ≥ 3849 Hz, HDR high resolution,
Low brightness, And its grayscale can be up to 24 bits.
So the LEDscreen reaches the perfect visual performance.

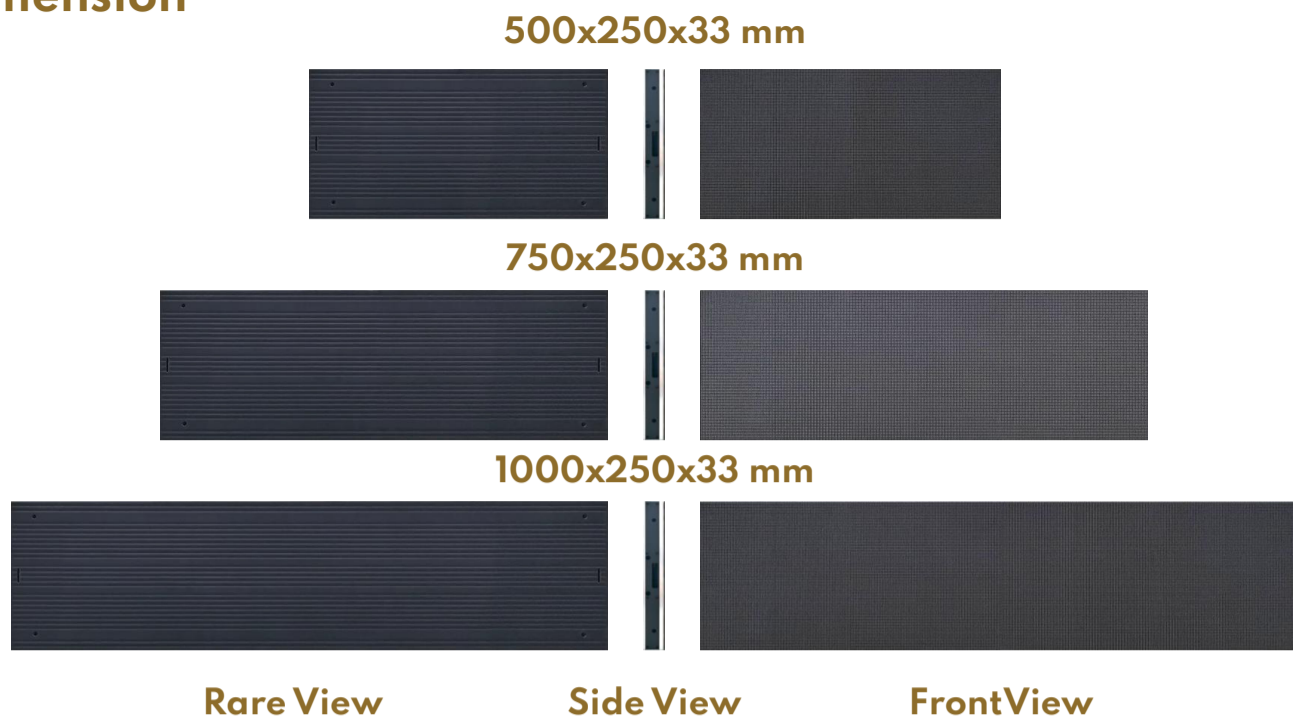


Front Maintenance Design, Fast and Easy operation

All electric component : power supply, receiving card,
and data cable are easily accessed from the front.
This design feature allows for direct wall mount installation.



Cabinet Dimension



Light Weight
5.8 / 4.4 / 2.9 kg

Ultra thin cabinet
only 33mm thickness

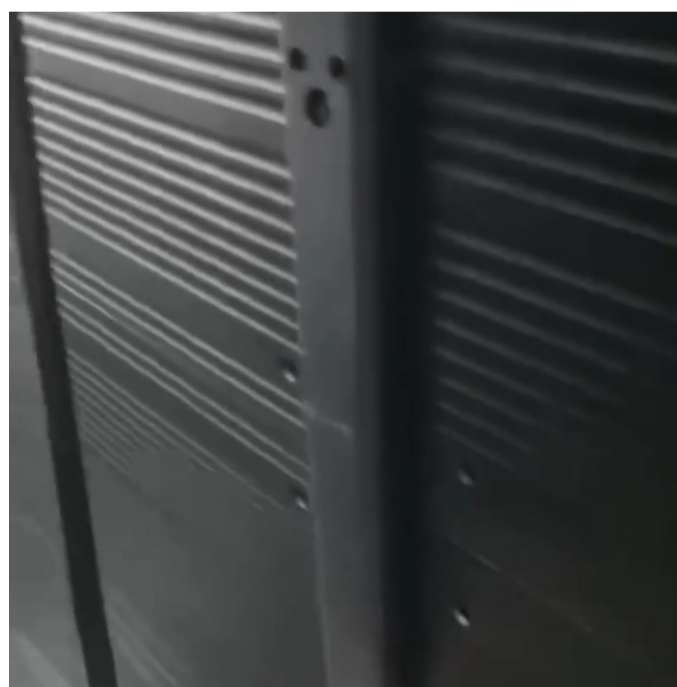


Structure

- Aluminum material frame
- High precision, high strength
- Perfect heat dissipation
- Thickness 33 mm

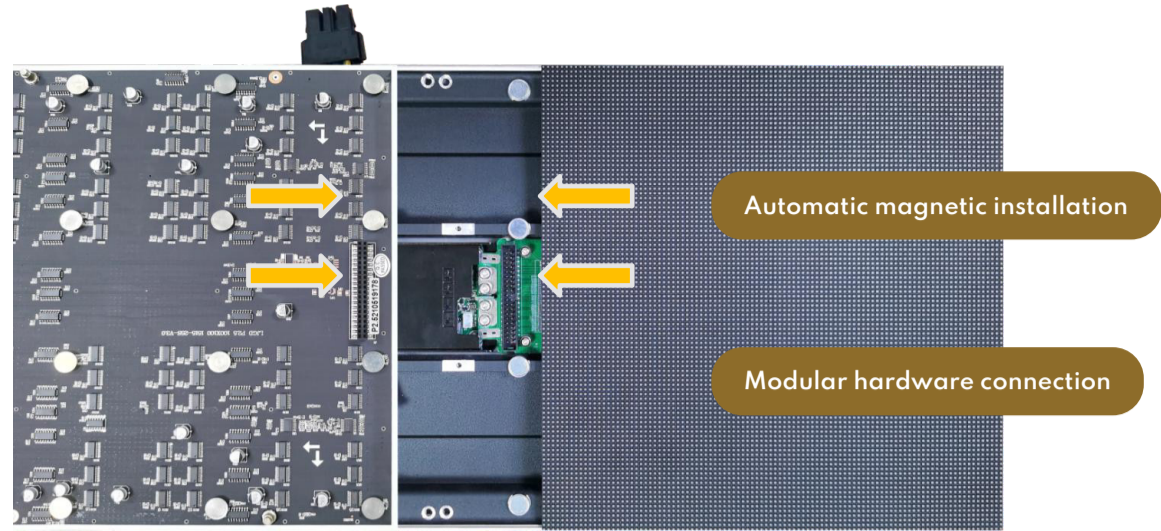
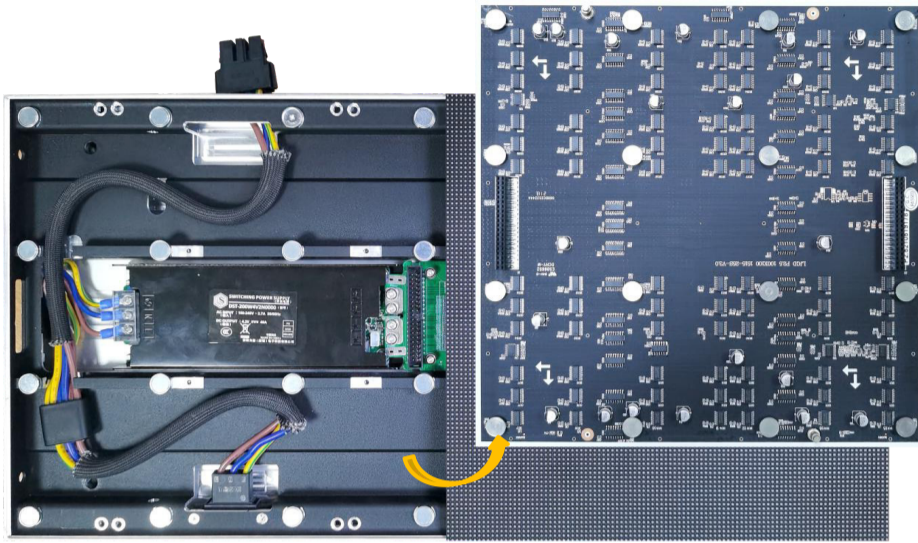
Special Bracket:

Pinnacle series use special mounting brackets to hang all cabinets. This improves significantly better screen alignment and flatness. Solving the common installation problem with curvature or waving wall finishing or even the supporting metal frame bending from welding, which usually happens.



Hot Swapping • Wireless Connection

- Modules adopt HUB connection, safer signal transmission.
- The hot swapping technology is a key point that achieves the continuous operation uninterrupted maintenance.



- Ultra-thin thickness, but roomy interior.
- Standardized design, wide applications.

Performance



High refresh rate



Low refresh rate



High refresh rate



Low refresh rate

Application



PINNACLE Series

Pinnacle Series					
Model	P1.95	P2.5	P2.604	P2.976	P3.91
LED type	SMD1515	SMD1515	SMD1515	SMD1515	SMD2121
Physical Density (dots/sq.m)	262144	160000	147456	112896	65536
Module Resolution	128x128	250x250	96x96	84x84	64x64
Module Dimension (mm)	250x250	250x250	250x250	250x250	250x250
Module Quantity (WxH)	4x1/3x1/2x1	4x1/3x1/2x1	4x1/3x1/2x1	4x1/3x1/2x1	4x1/3x1/2x1
Panel Resolution	512x128	400x384	384x84	336x84	256x64
Maintenance	Front Access Service				
Cabinet Size	1000x250x33 mm / 750x250x33 mm / 500x250x33 mm				
Cabinet Material	Aluminum				
Pixel Calibration	Yes				
Brightness (nits)	700	800	800	800-1000	1000-1200
Color Temperature (K)	3200-9300 Optional				
Grey Scale (bit)	14/16 Optional				
Viewing Angle (V/H)	160°/160°				
Brightness/Color Uniformity	≥97%				
Contrast	5000:1				
Frequency Rate	50/60				
Drive Mode	1/32 Scan	1/25 Scan	1/32 Scan	1/28 Scan	1/16 Scan
Max Power Consumption (w/m ²)	800				
Avg. Power Consumption (w/m ²)	100-200				
Electric Power	AC90-264V / 47-63Hz				

Innovation Design



Front Access Service



Safety Connection



Power Connector