

# Summit Series

## SUMMIT PARAMETER

Available Pixel Pitch (mm)	1.9		2.6		2.9		3.9		4.8	
Panel Size (mm*mm)	250*750	250*1000	250*750	250*1000	250*750	250*1000	250*750	250*1000	250*750	250*1000
Panel Weight (Kgs)	4.0	5.3	4.0	5.3	4.5	6.0	4.5	6.0	4.5	6.0
Pixel Matrix Panel	128x384	128*512	96*288	96*384	84*252	84*336	64*192	64*256	52*156	52*208
Pixel Density (dot/m2)	262,144		147,456		112,896		65,536		43,264	
LED Type	SMD1010 (Nationstar)		SMD2121 (Nationstar)		SMD2121 (Nationstar)		SMD2121 (Nationstar)		SMD2121 (Nationstar)	
Brightness (cd/m2)	700		800		800		1,000		1,000	
Scan Type	1/32		1/32		1/28		1/16		1/13	
Module Size (W*H mm)	250x250 mm									
Maintenace Method	Full Front Access									
Installation Method	Wall Mount/Hanging/Stack									
Colors	281 Trillion									
Color Intensity	16 bit									
Grey Scale Rate	16 bit									
Viewing Angle	H 140° and V 120°									
Refresh Rate	> 3840 Hz									
Defects Rate	< 0.00001									
Lifespan	100,000 Hours									
MTBT	> 10,000 Hours									



Slim Design  
4cm Thickness



upto  
**P1.9** P4.8 upto P1.9



Light Weight 21 kgs per sqm



Refresh Rate  
3840 Hz



Easy Installation  
"Dry Wall Direct Applicable"



Full Front Service With  
"Vacuum Pulling Device"







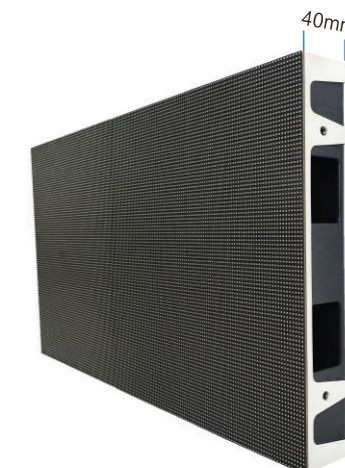
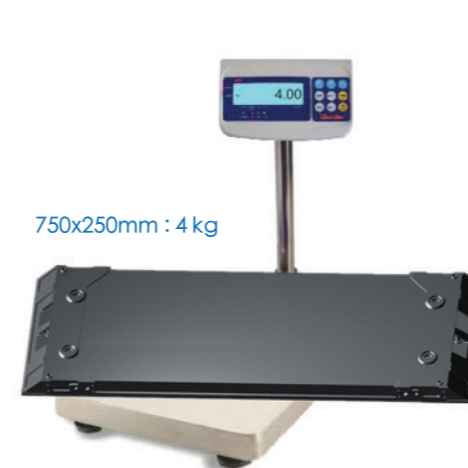
▲ Hanging Installation

- Hanging installation
- Stacking Installation
- Wall Mounting Installation



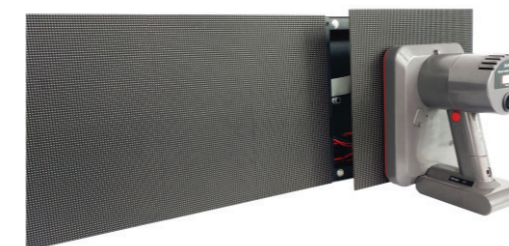
▲ Wall Mounting Installation

- Cabinet weight 4kg only, easy to move, easy install
- Cabinet thickness 40mm only, slim design, save installation structure, save installation space
- Die casting cabinet, higher splicing preciseness, better flatness



- Full front access, all parts can be serviced from front side, no installation space required behind the cabinet

- 250x750mm and 250x1000mm cabinet could be easy to build any screen size for various projects.



▲ Front Maintenance



Power Connector

- Data cable and power cable wiring from cabinet internal, easy connection

