

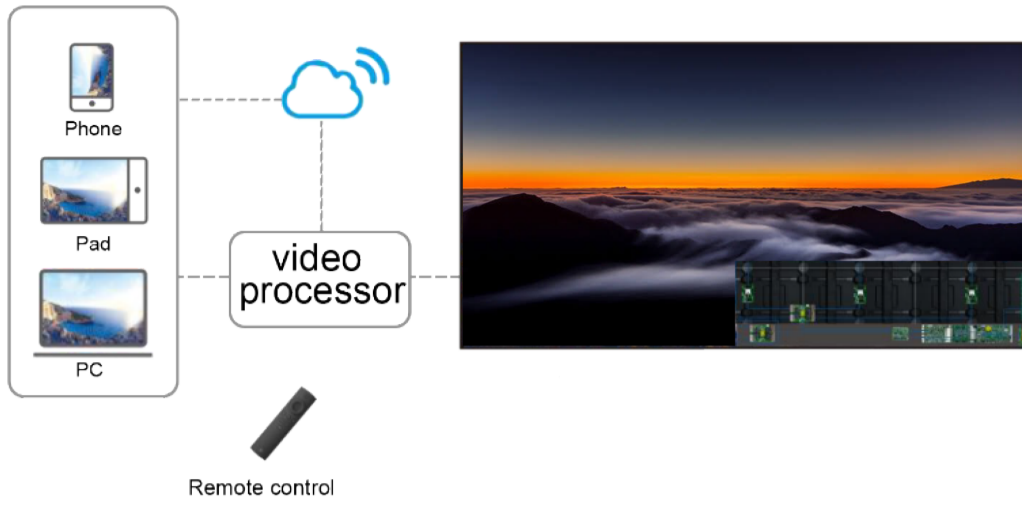


SEAMLESS CORNER

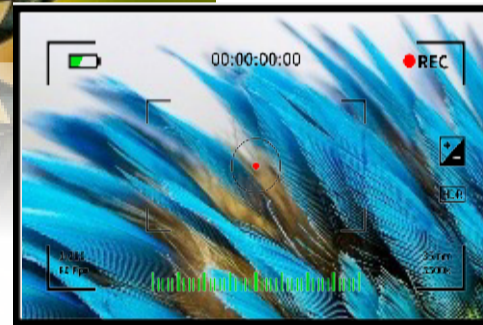


VISTA Lite Series

P3.91, P4.81, P6.25, P7.8, P10.4 FULL OUTDOOR LED
LIGHT WEIGHT CABINET / PANEL



- **Intelligent color accuracy** evaluation, the controller system that allows you to create, schedule, and organize content from anywhere, on any device.
- You can **monitor the health** of your display at any time and control basic display functions remotely. Automatic adjustable brightness with light sensor.



- **High refresh** ($\geq 1920-3840$ hz), no flicker when taking pictures.
- **HDR high quality**, restore the real vision, lifelike.

• **High Pixel :**

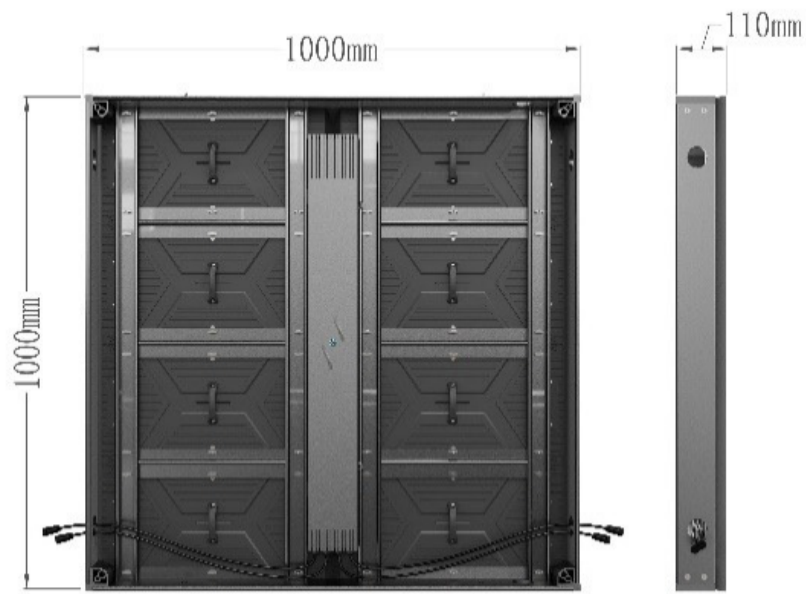
Ultra-high resolution featuring 3.9mm & 4.8mm LED display provides much higher pixel than traditional.

• Gold aspect ration: 4:3/16:9.

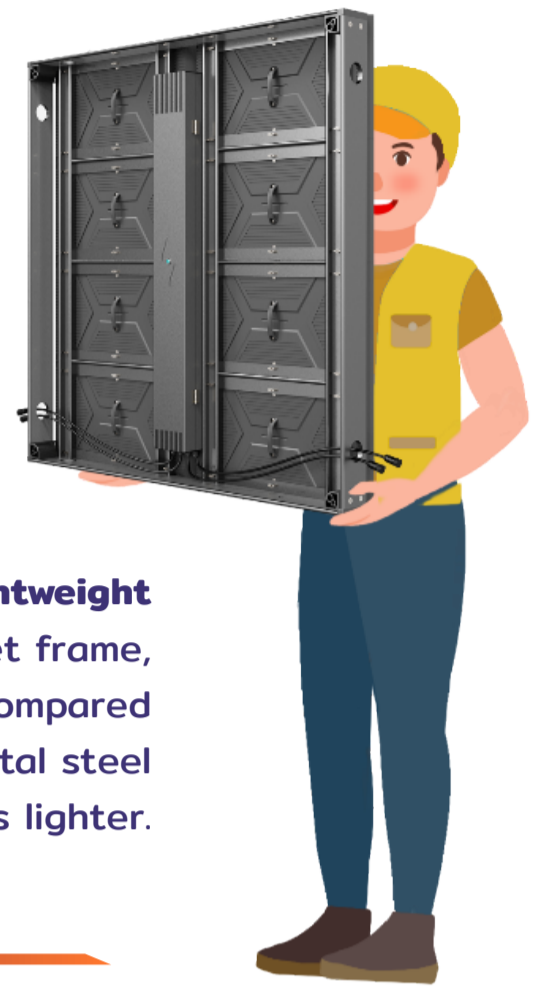
• Customized resolution: 1080p,2K,4K,8K, etc



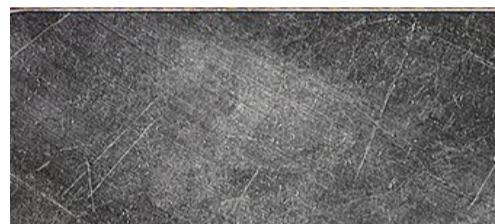
Double pin port available : Easy to make replacement no need to consider the connecting direction.



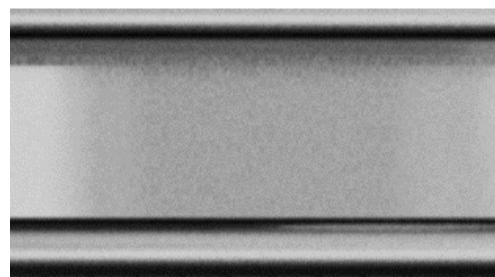
Standardize size
 1000(w)mmx1000(h)mm
 The thickness is only 110mm



Lightweight
 Aluminum cabinet frame,
 it is 25kg/pc only, compared
 to traditional metal steel
 cabinet around 30kgs lighter.

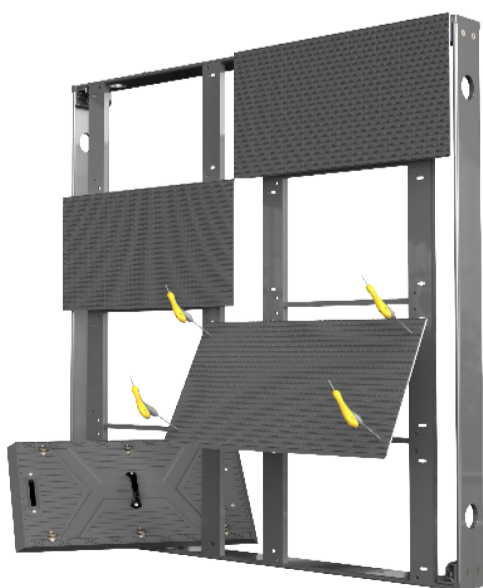


Magnesium



Die-cast Aluminum

Adopted to Die-cast Aluminum profile
 more durable and highly
 stable compared to traditional
 magnesium panels.



Fast front/rear maintenance



Energy saving

Double power supply design
 to save half power consumption.



HUB connection

Fanless design

Led display running without any noise and enable the display working more stable under dusty and humid area

Better heating dissipation

Module casing exposed in the air directly for better heating dissipation. No need air conditioners for cooling.



- Customized big chip led lamps enable to reach 10,000nits brightness. Better picture quality under direct sun.
- 10,000nits brightness enables the display still have good brightness after brightness reduction of years running. (6,000-8,000 nits in standard model, up to 10,000 nits in special custom model)

UP to 10,000nits ultra-high brightness



IP66 high ingress protection enable the display to work under any harsh environment



Save more than 20% power

Big led chip, energy saving drive IC and energy saving power supply

Various Installation to make it flexible and easy applications.



• Single pole double sided led billboard



• Wall mounting video wall



• Mobile LED track and LED trailer



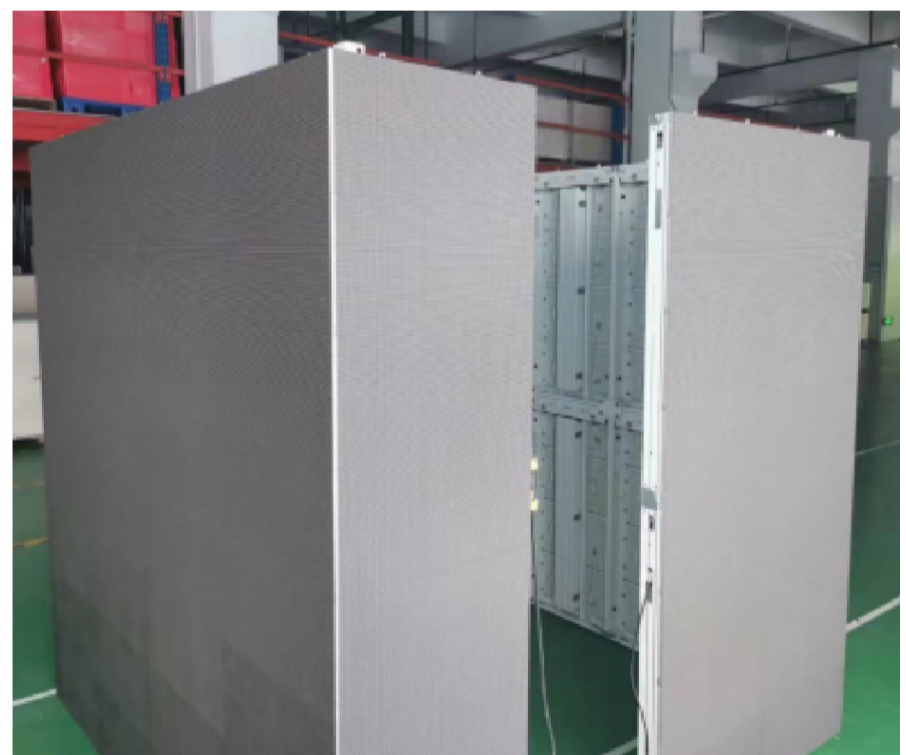
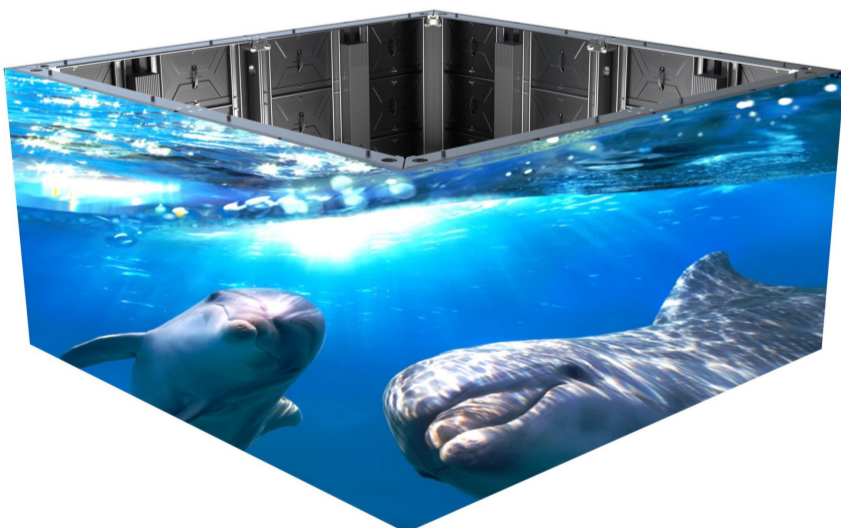
Light weight ABS material panels
Customized seamless angle corner screen
(at viewing distance)



45' angle cabinet for sharp and clean corners



Perfect choice for 3D effect at building corners



seamless 90' corner capable
(seamless view at 5-6 meters or further away, which would look seamless when installed at any building)

VISTA Lite Series

VISTA Lite Series					
Item	P 3.91	P 4.81	P 6.25	P 7.8	P 10.4
Pixel Pitch	3.906mm	4.807mm	6.25mm	7.8125mm	10.417mm
LED Type	Matrix SMD1921 (Nationstar) Gold wire (Optional)		Matrix SMD2727 (Nationstar) / Gold wire (Optional)		
Module Resolution	128 × 64dots	104 × 52dots	80 × 80dots	64 × 32dots	48 × 24dots
Driving Mode	1/16scan or 1/8scan	1/13scan or 1/7scan	1/7scan	1/7scan	1/7scan
Module Pixels	8192dots	5,408dots	6,400dots	2,048dots	1,152dots
Module Size	500 × 250mm				
Cabinet Size	1000 × 1000mm/1000x500mm				
Cabinet Type	Front/Back Service				
Cabinet Resolution	256 × 256dots	208 × 208dots	160 × 160dots	128 × 128dots	96 × 96dots
Pixel Density	65,536 dots/m ²	43,264 dots/m ²	25,699 dots/m ²	16,384 dots/m ²	9,216 dots/m ²
Minimum Viewing Distance	≥3.9 m	≥4.8 m	≥6m	≥7.8m	≥10.4m
Brightness	6,000-8,000 nits (up to 10,000 nits for special custom model)				
Contrast Ratio	5000:1				
Color Processing Depth	20 bits				
IP Grade	IP66 Front / IP65 Back				
Refresh Rate	1,920Hz~3,840Hz				
Gray Scale	14bits~22bits				
Viewing Angle	H:160° / V:160°				
Power Consumption	500W/m ² (MAX) 200W/m ² (Average)				
Input Voltage	AC100V~AC240V @ 50Hz / 60Hz				
LED Life span	100,000 Hours				
Operating Temperature	-20°C~65°C				
Operating Humidity	10%~90%				
Cabinet Material	Die-cast Aluminum				
Cabinet Weight	25 kg/m ²				
Control System	Novastar/Linsn/Colorlight,etc				
Signal Source Compatibility	DVI, HDMI, DP, SDI, etc.				